

How to setup Firefox

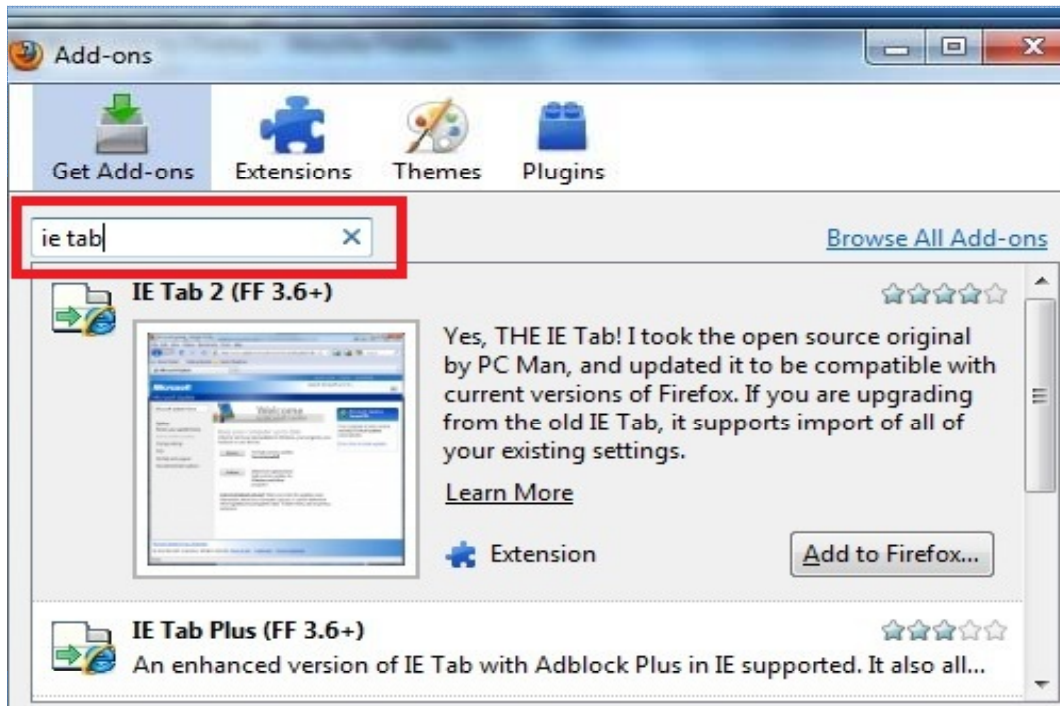
Before we can use Firefox Browser, we need to configure Internet Explorer to allow ActiveX.

Follow the instruction below:

- 1 Open Internet Explorer
 - 2 Click on Tools
 - 3 Click on Internet Options
 - 4 Click on Security (Tab)
 - 5 Click on Trusted Sites (Button)
 - 6 click on Sites
 - 7 Uncheck the "require server verification" box
 - 8 Add the dvr ip address as trusted site (if on local network),
or public ip address if connecting from a remote location
 - 9 Click on Close
 - 10 Click on Custom Level
- Lower security level at bottom drop down box to "LOW"
Click on "Reset" button to the right
click Yes
click on Ok
then click on Apply and Ok

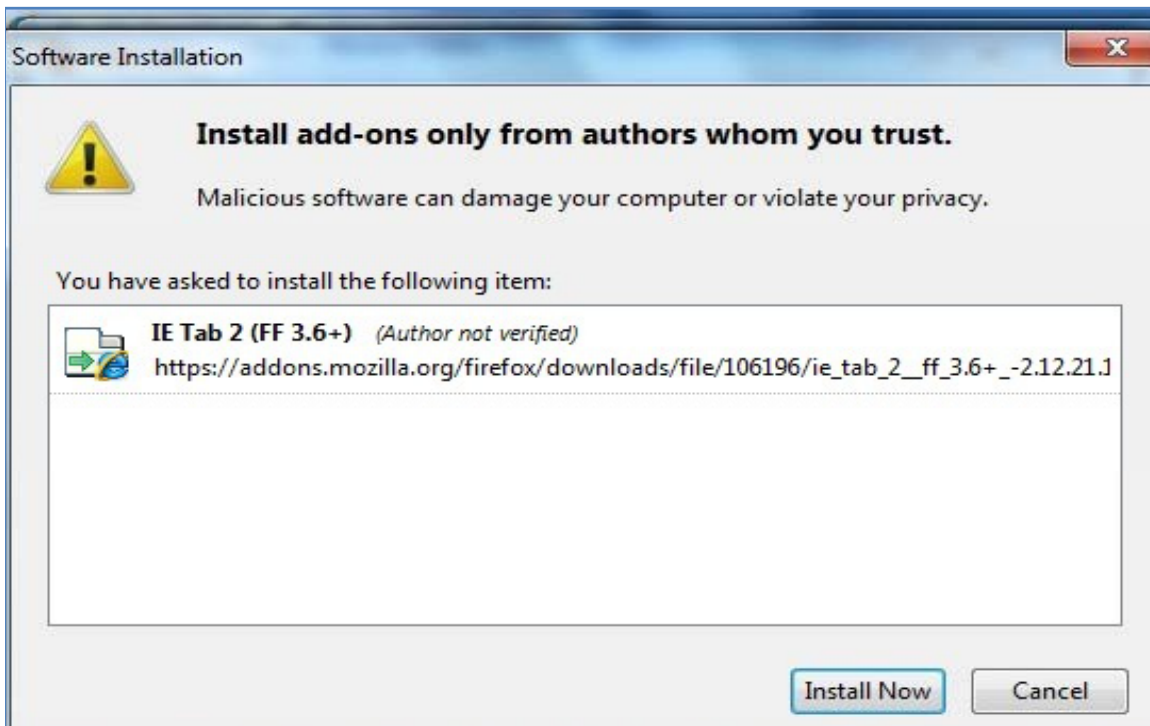
On Firefox, we need to install IE Tab add on first.

Click on TOOL and ADD ONS and on search type in IE TAB . It will find IE Tab 2. Click on Add to Firefox box.



How to setup Firefox

Click on Install Now. Once installation finished, click on Restart Firefox.



Now enter the IP address of the DVR. You will get a blank screen, Click on TOOL and click on IE Tab 2 options

