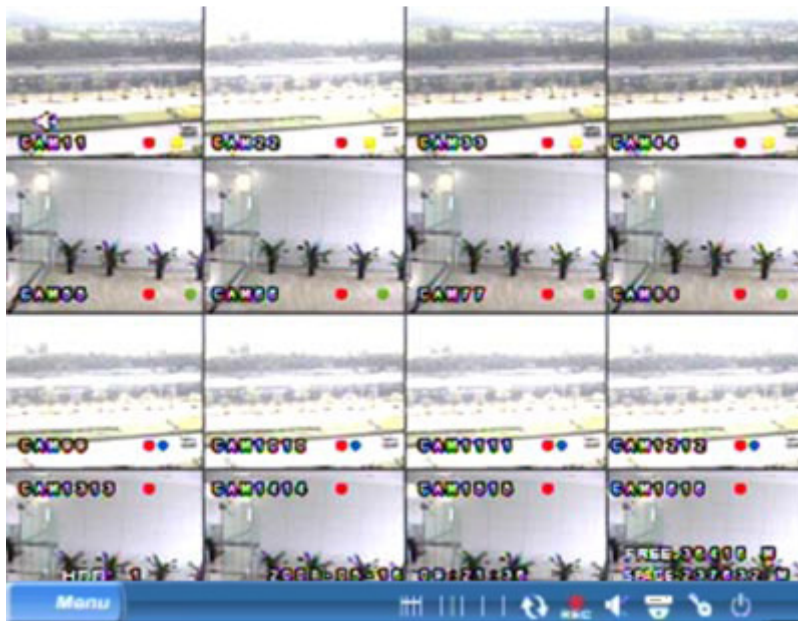
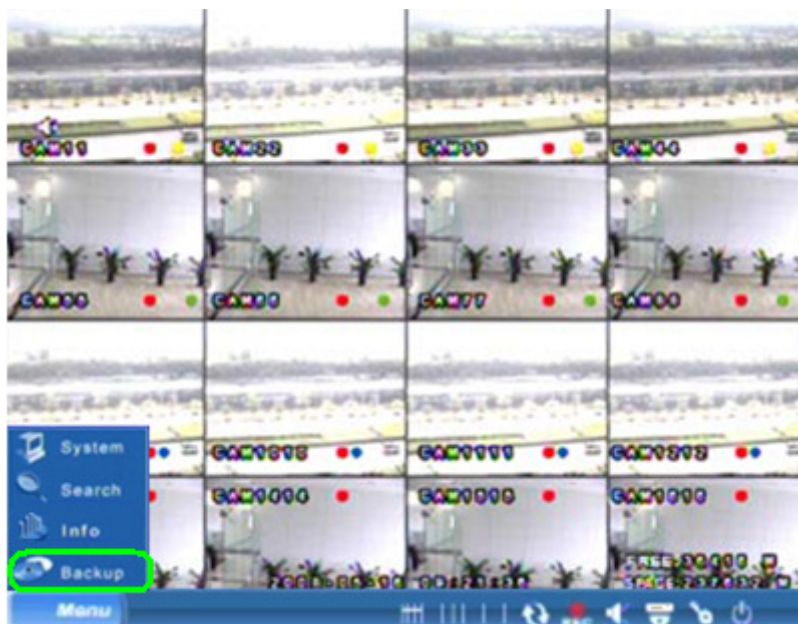


QSDT8DP Video Backup

STEP 1: On the channel display screen, right click and a small control bar will appear at the bottom of the screen.

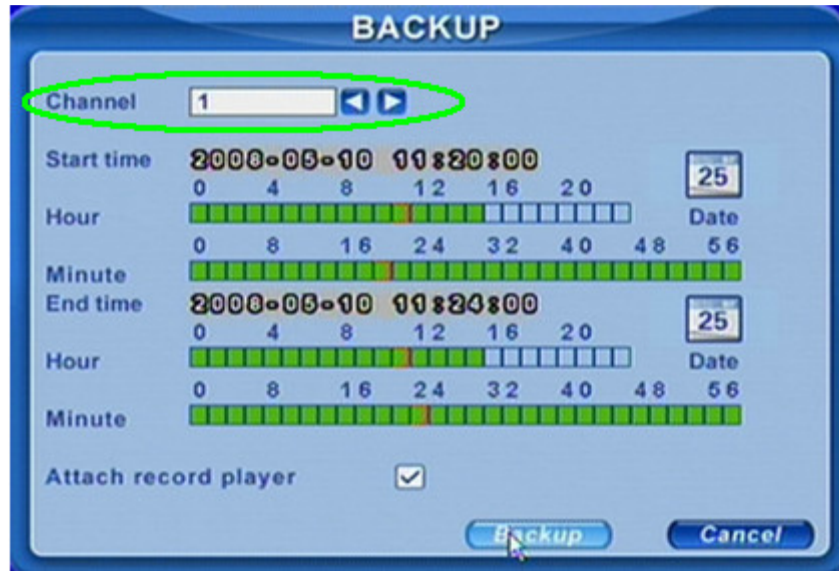


STEP 2: Move the cursor to “Backup” and click.



QSDT8DP Video Backup

STEP 3: Choose the channel of the file you wish to back up



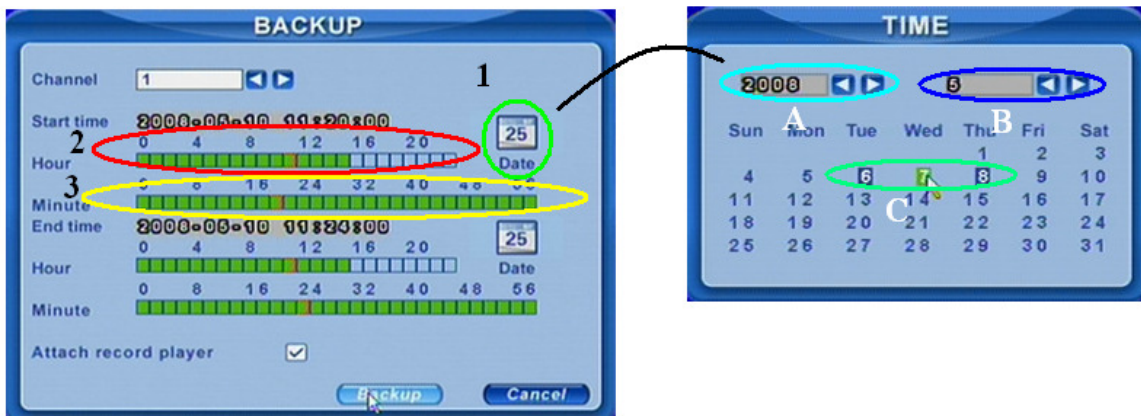
STEP 4: Choose the Start time of the file you wish to back up

Part 1: Move the cursor to “Date” and press “Enter”

- a. Choose the Year
- b. Choose the Month
- c. Choose the Day

Part 2: Choose the hour

Part 3: Choose the minute



QSDT8DP Video Backup

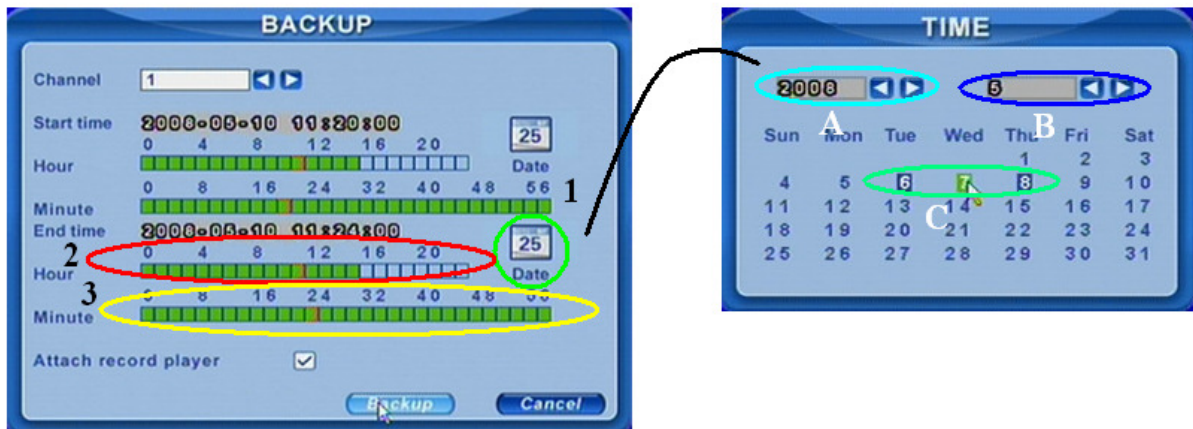
STEP 5: Choose the End time of the file you wish to back up

Part 1: Move the cursor to “Date” and press “Enter”

- a. Choose the Year
- b. Choose the Month
- c. Choose the Day

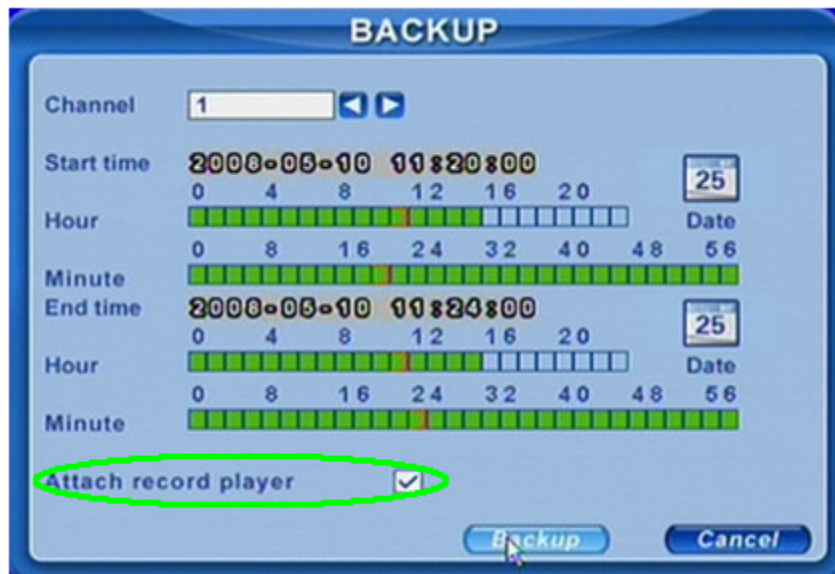
Part 2: Choose the hour

Part 3: Choose the minute

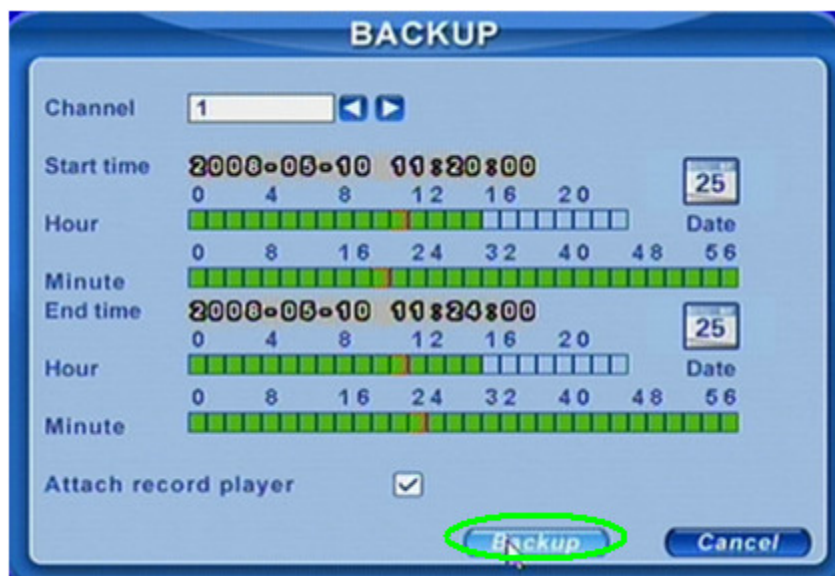


QSDT8DP Video Backup

STEP 6: Put a checkmark in the box next to “Attach record player” if you wish to include a file player with your backed up files (this is highly recommended).

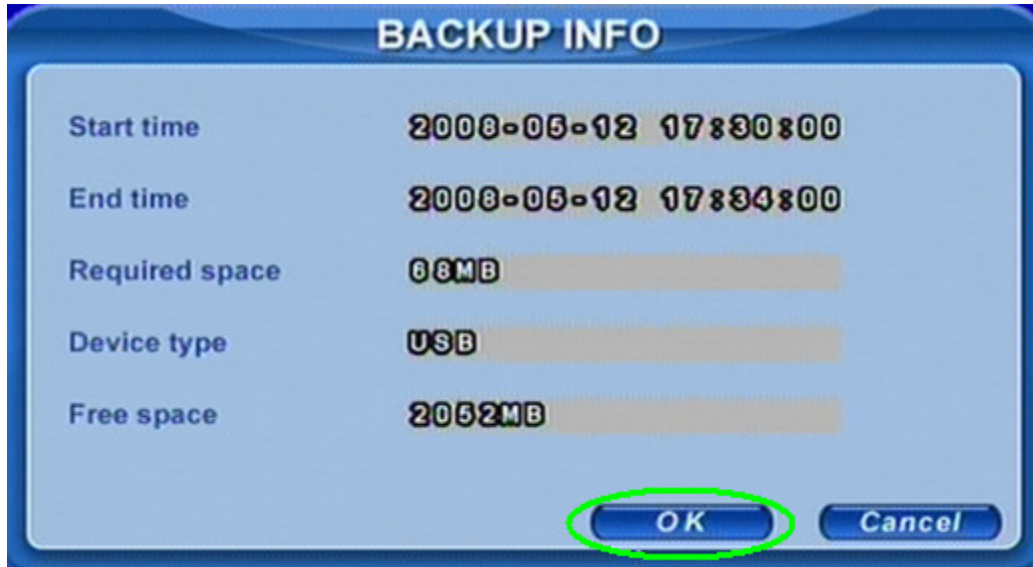


STEP 7: Move the cursor to “Backup” and press “Enter”

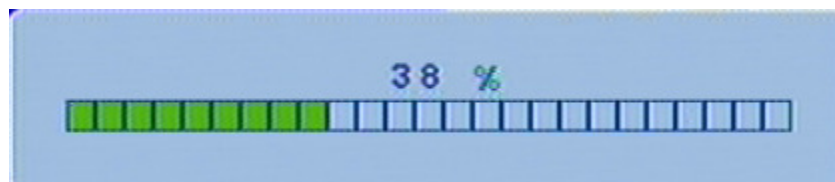


QSDT8DP Video Backup

STEP 8: A window will pop up with information concerning that file that you wish to back up. If everything looks correct, move the cursor to “OK” and press “Enter”.



STEP 9: A progress bar will pop up to show the back up's progress



STEP 10: Once your back up is completed a window will pop up. Press OK.

