

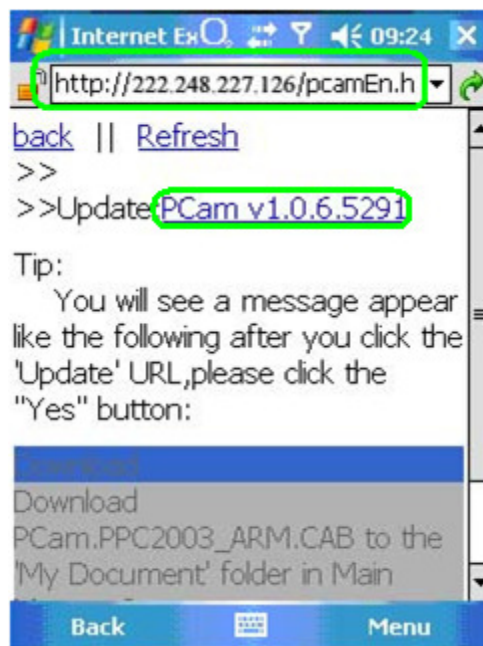
## QSDT8DP Smart Phone Access: Windows Mobile

Prior to setting up your phone to view your cameras, your DVR must be set up for remote viewing.

**STEP 1:** Run Internet Explorer on your phone.

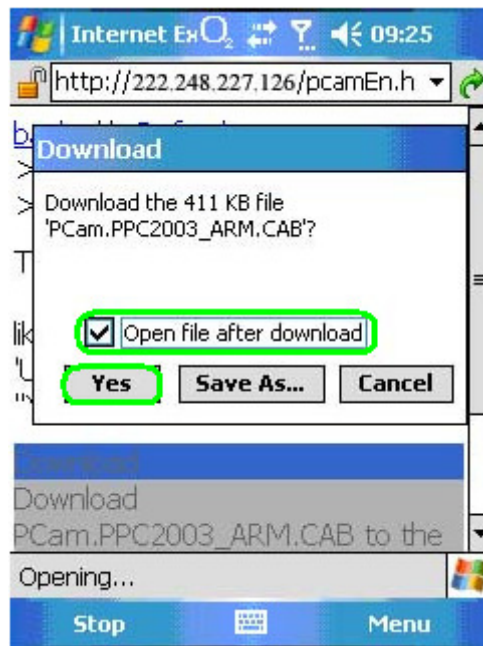


**STEP 2:** In the address bar, enter the external IP address of your router. Click on the PCam update to start installation.

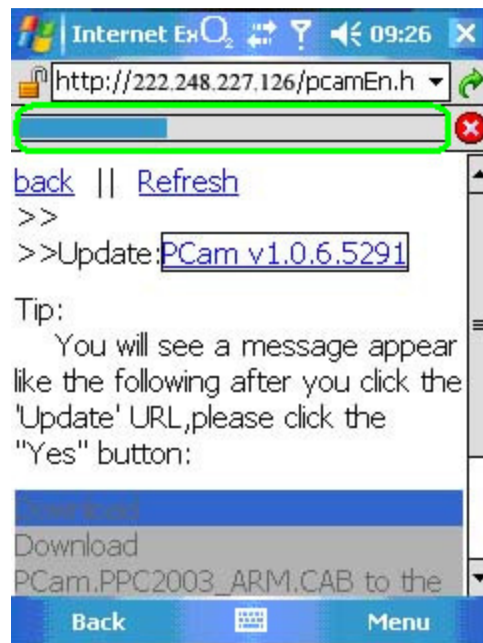


## QSDT8DP Smart Phone Access: Windows Mobile

**STEP 3:** Check the box next to “Open file after download” and click “Yes” to install PCam.

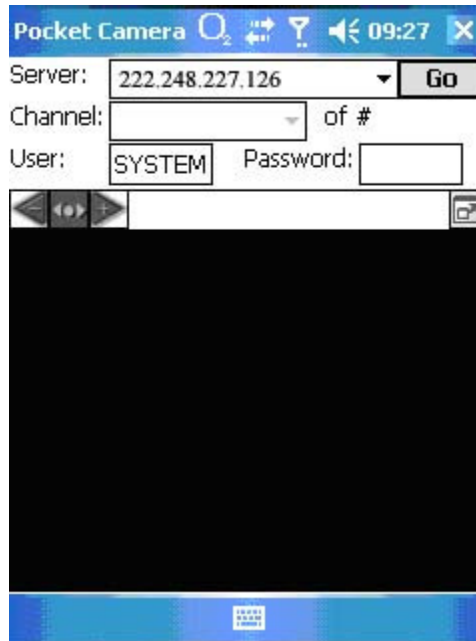


**STEP 4:** A small progress bar will show the progress of the installation.



## QSDT8DP Smart Phone Access: Windows Mobile

**STEP 5:** Once PCam has been installed, it should appear on the screen.



**STEP 6:** Under “Server”, enter the external IP address of your router. Under “User” and “Password”, input the login information associated with your DVR. Click on “Go”.



## QSDT8DP Smart Phone Access: Windows Mobile

**STEP 7:** The default channel is Camera 1; if you wish to change cameras, go to “Channel” and change the cameras. You can only view one camera at a time.

