

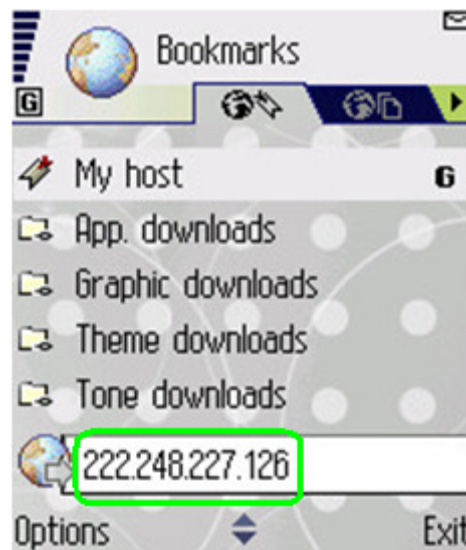
## QSDT8DP Smart Phone Access: Symbian

Prior to setting up your phone to view your cameras, your DVR must be set up for remote viewing.

**STEP 1:** On your phone, run your web browser.

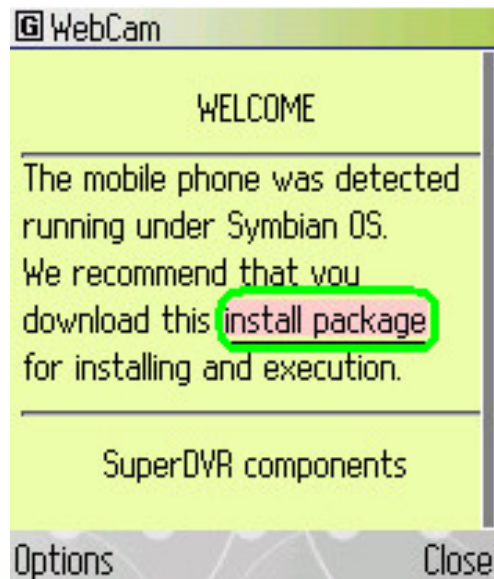


**STEP 2:** Under “Bookmarks”, input your router’s external IP address in a new bookmark. Click on this bookmark to access your DVR.

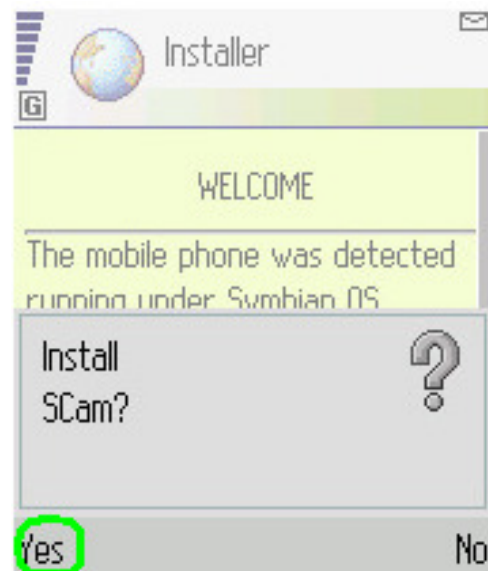


## QSDT8DP Smart Phone Access: Symbian

**STEP 3:** A welcome screen will appear; click on the “install package” link.



**STEP 4:** Click “Yes”.

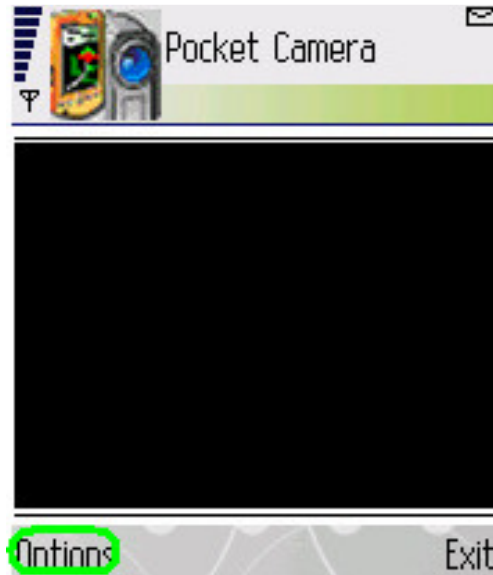


## QSDT8DP Smart Phone Access: Symbian

**STEP 5:** On the System Menu screen, open the SCam icon.



**STEP 6:** Click on “Options”.



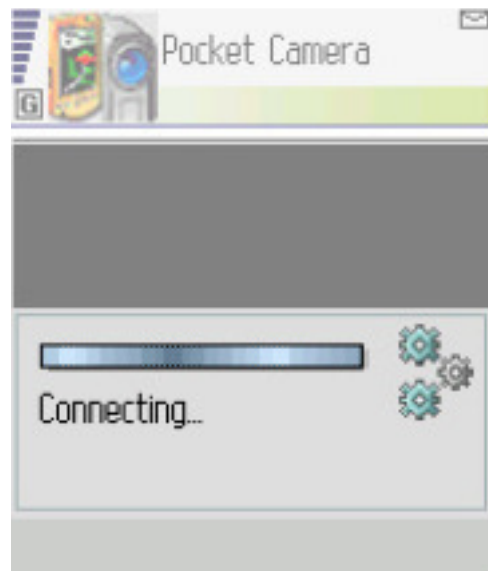
## QSDT8DP Smart Phone Access: Symbian

**STEP 7:** Enter the external IP address from your router in the “Server” line. Under “Username” and “Password”, enter in the login information and click “OK”.



The screenshot shows the 'Pocket Camera' application interface. At the top, there is a title bar with a mobile phone icon and the text 'Pocket Camera'. Below the title bar, there is a green bar with a signal strength indicator and the text '拼音'. The main area contains three input fields: 'Server:', 'Username:', and 'Password:'. The 'Server:' field is highlighted with a green border. At the bottom, there are two buttons: 'OK' and 'Cancel'.

**STEP 8:** Your phone will start connecting to your DVR.



## QSDT8DP Smart Phone Access: Symbian

**STEP 9:** Your phone will display one camera channel at a time. If you wish to change cameras, click on “Options” and go to “Camera Options”.

