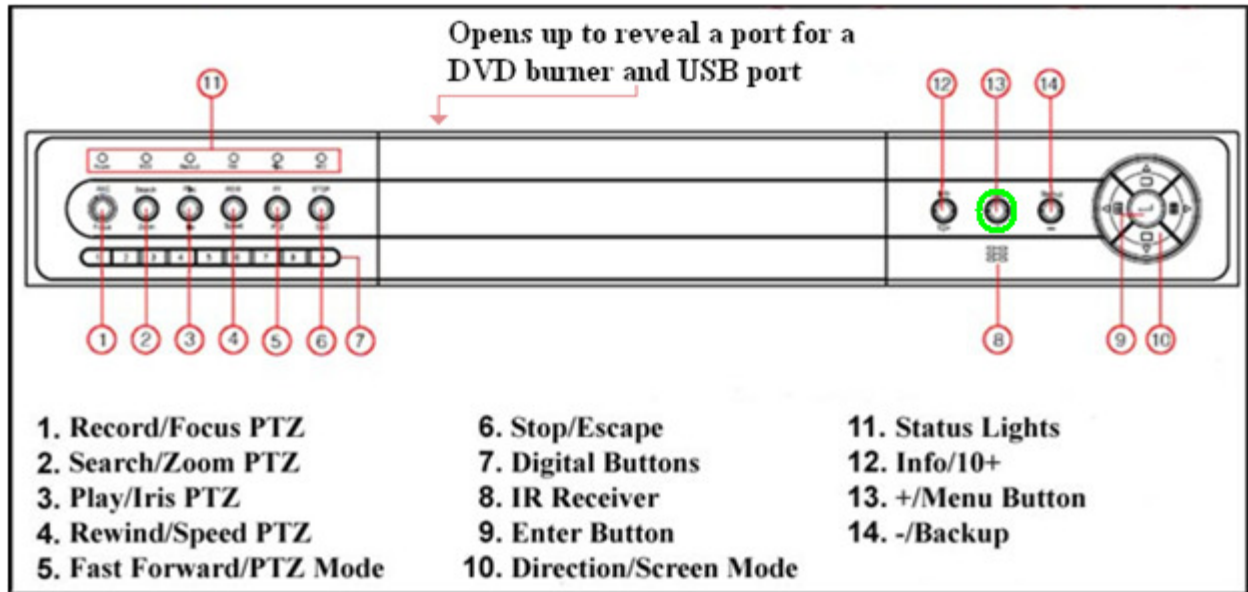
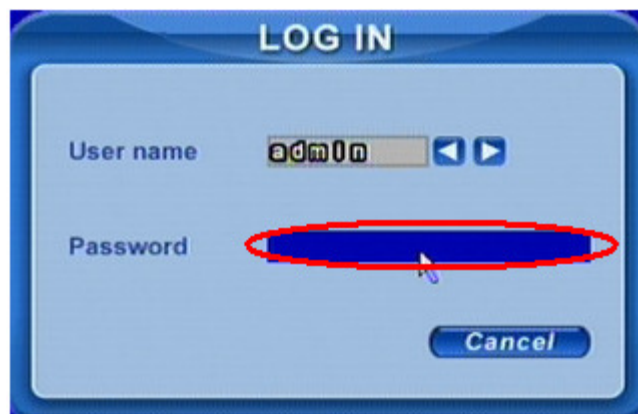


QSDT8DP Setting up the Sequence Feature

STEP 1: Press the “Menu” Button on the front DVR panel

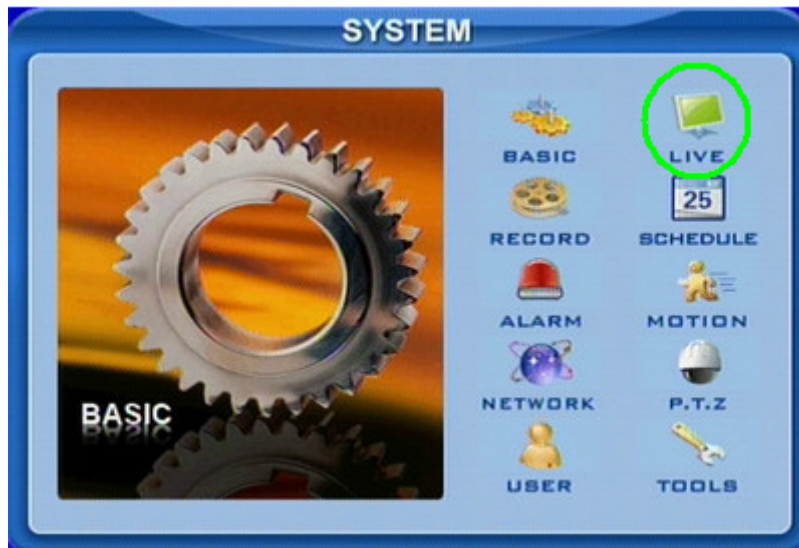


STEP 2: Enter Login information to access the System menu. Default User name is “admin” and default Password is “123456” (this can be punched in on the front panel of the DVR using the digital buttons and direction keys).

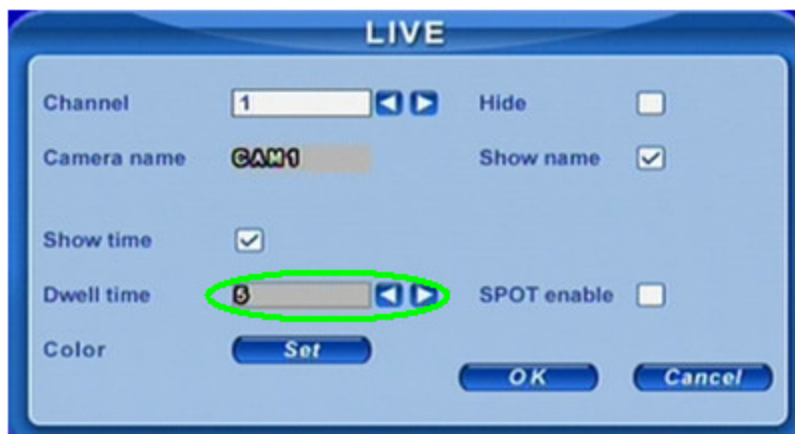


QSDT8DP Setting up the Sequence Feature

STEP 3: Move the cursor to “Live” and press “Enter”.

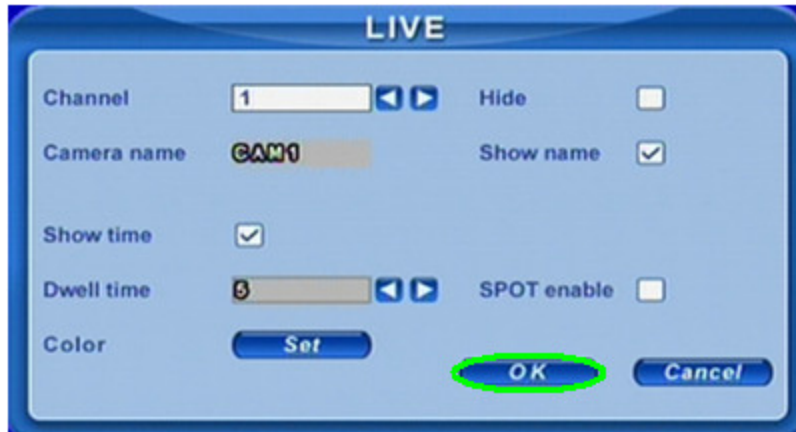


STEP 4: Move the cursor to “Dwell time” and select the length of time that you would like for each channel to dwell during the sequence mode.

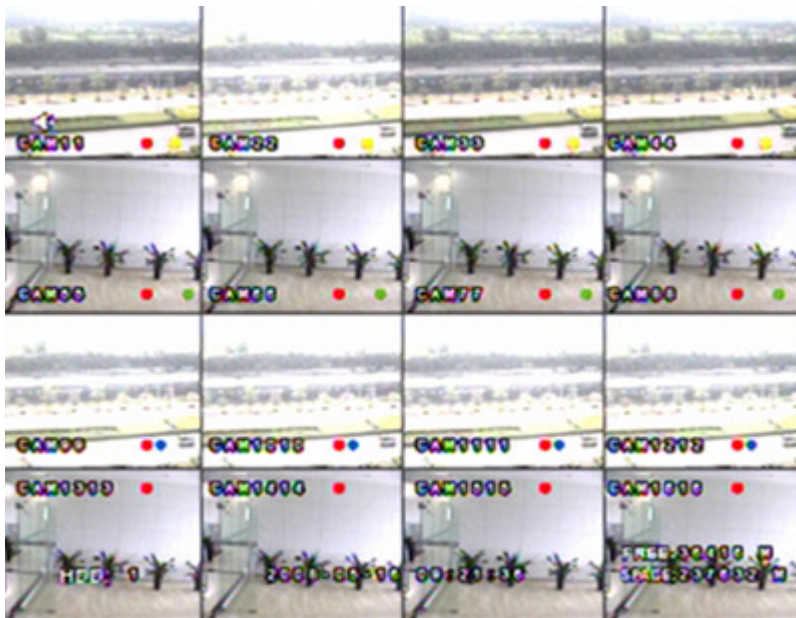


QSDT8DP Setting up the Sequence Feature

STEP 5: Move the cursor to “OK” and press “Enter”.



STEP 6: Return to the channel display screen. Press Enter.



QSDT8DP Setting up the Sequence Feature

STEP 7: A small control bar should appear on the bottom of the channel display



STEP 8: Move the cursor to the square shaped button and press “Enter”. This will display a single channel.



QSDT8DP Setting up the Sequence Feature

STEP 9: Move the cursor to the button with two arrows and press “Enter”. This will start the sequence feature.



STEP 10: An icon similar to the button you pushed in step 9 will appear in the top left corner. Your system will start displaying individual channels in succession.

