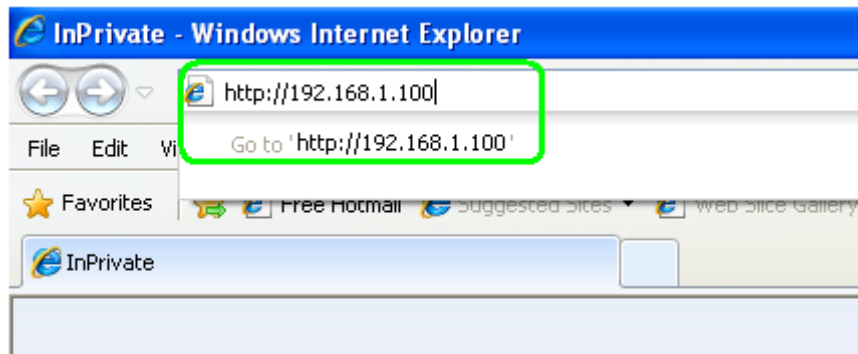


QSDT8DP Motion Recording over the Network

STEP 1: Turn on your computer and open Internet Explorer.

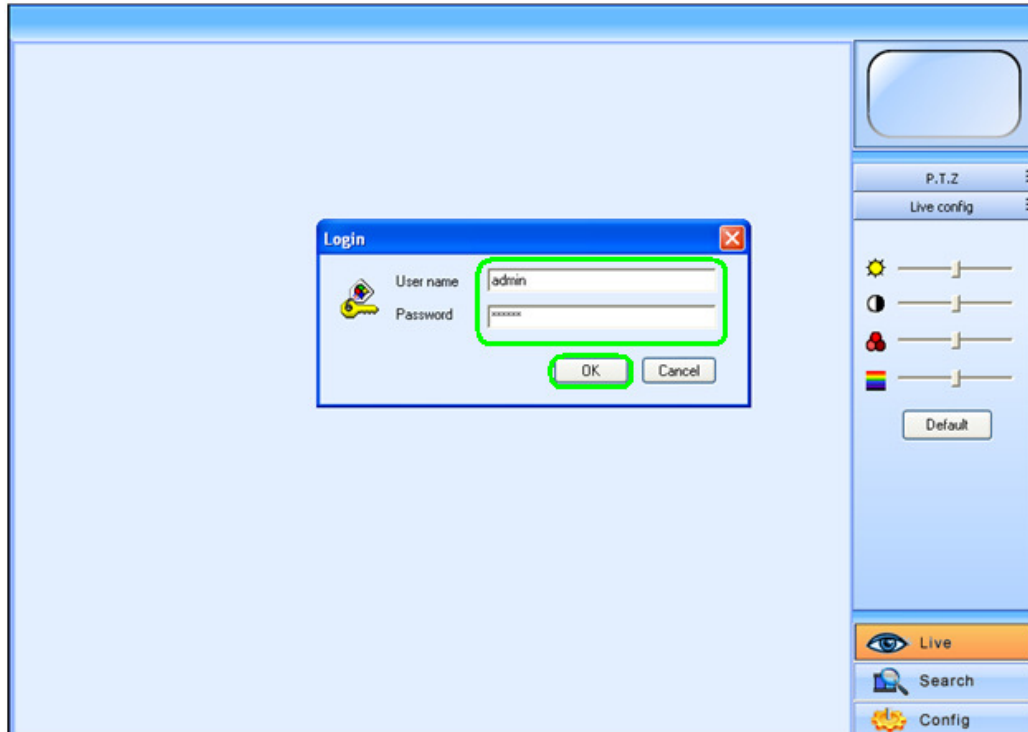


STEP 2: In the address bar, enter in the IP address of your DVR. (Note: If your WebCam viewer does not fit the internet explorer, right click above the “New Tab” button and disable the different toolbars that may be taking space)

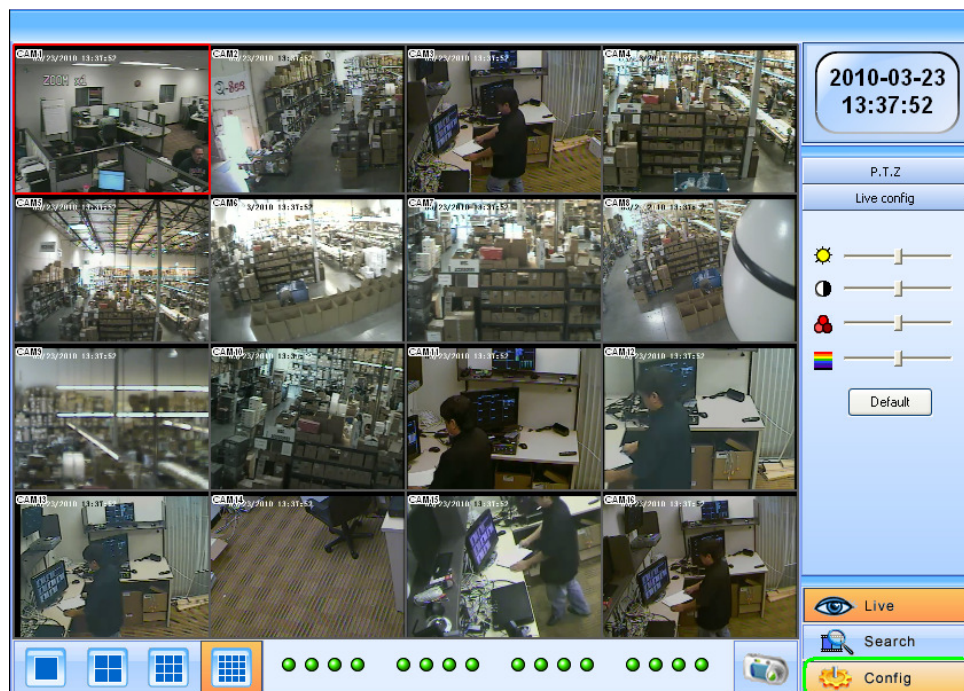


QSDT8DP Motion Recording over the Network

STEP 3: Enter your login information (default user name is “admin” and the default password is “123456”) and click “OK”. (If this screen does not appear, see the “ActiveX Controls” guide)

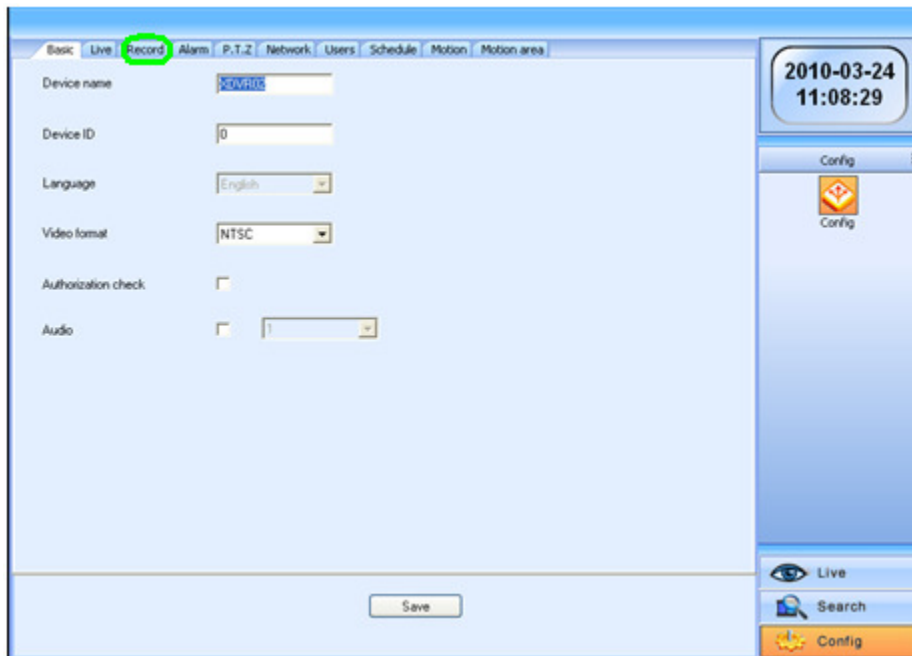


STEP 4: Click on the “Config” button.

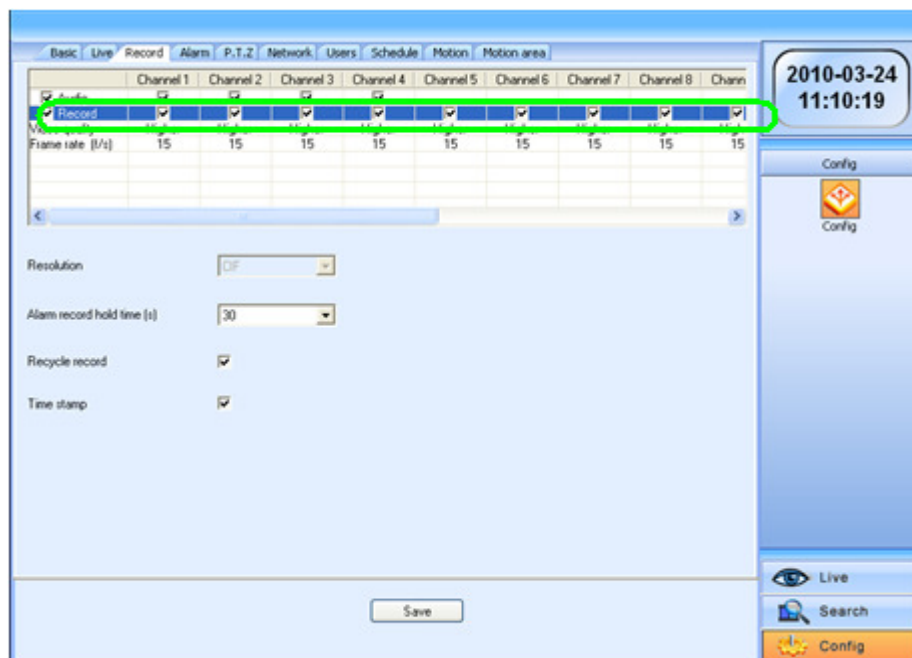


QSDT8DP Motion Recording over the Network

STEP 5: Click the “Record” tab.

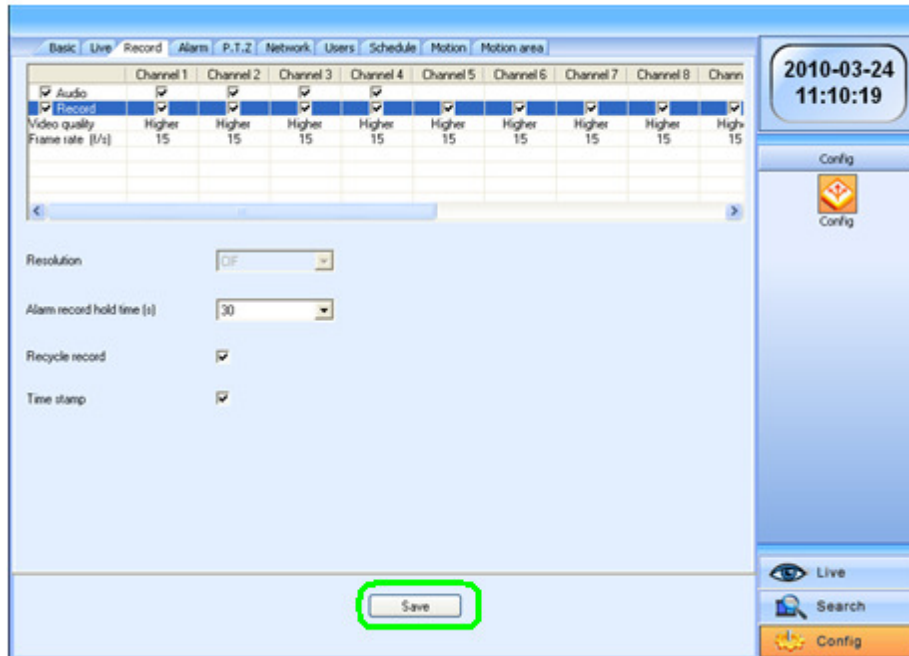


STEP 6: Check the boxes of the channels you wish to setup motion recording for.

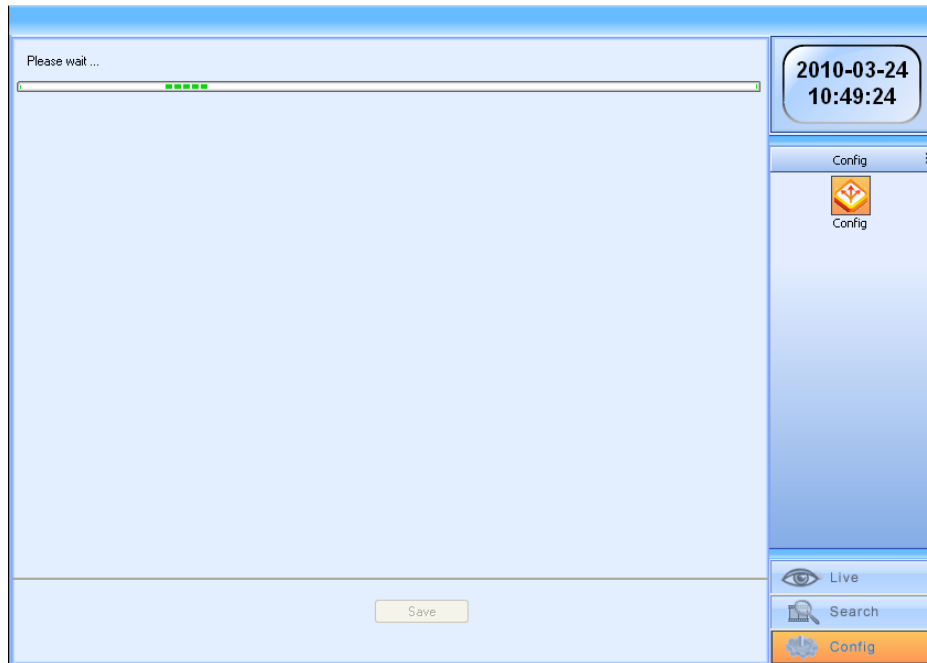


QSDT8DP Motion Recording over the Network

STEP 7: Click the “Save” button.

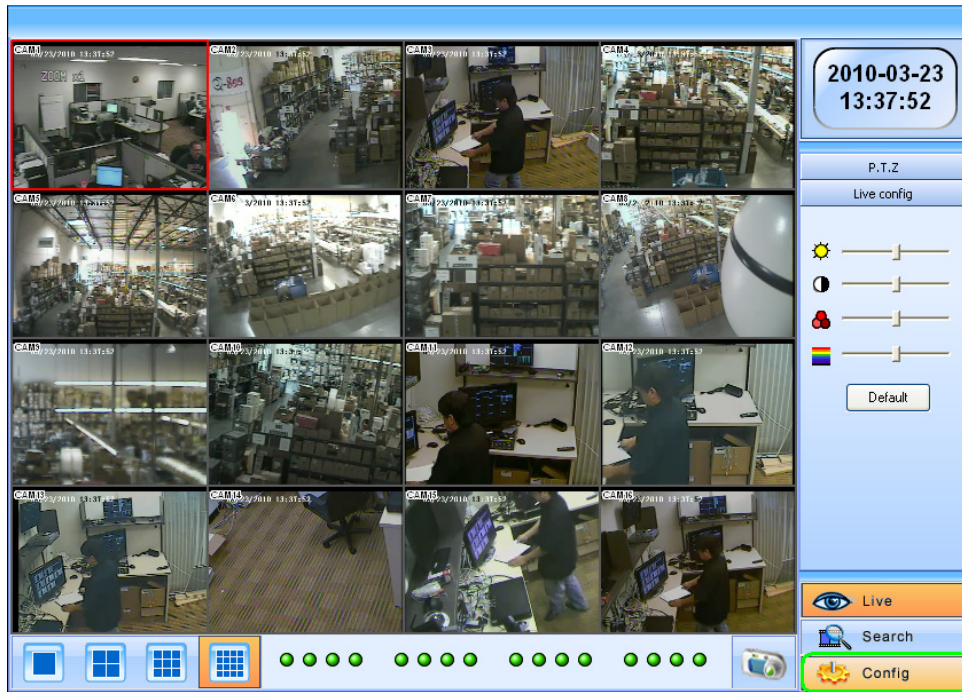


STEP 8: A progress bar will show the progress of your record settings being saved.

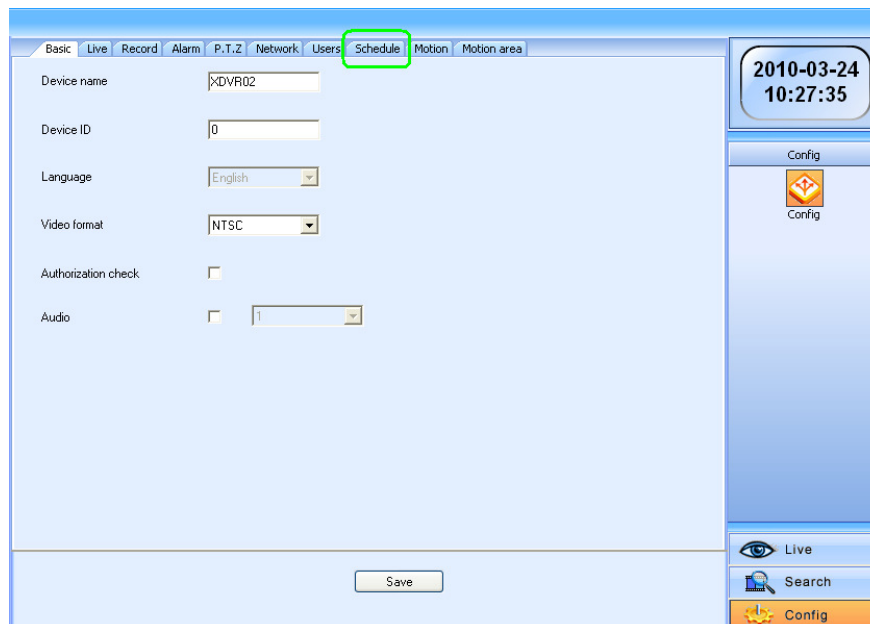


QSDT8DP Motion Recording over the Network

STEP 9: Click the “Config” button.

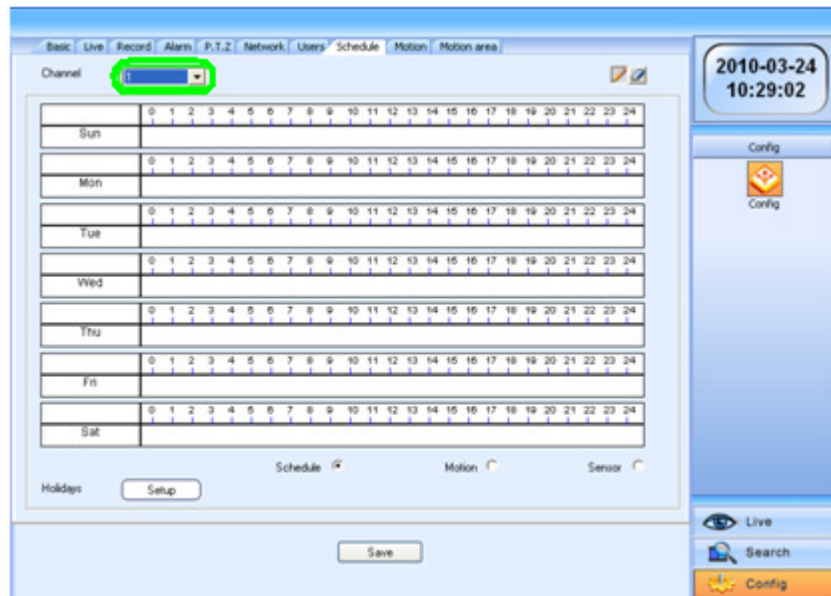


STEP 10: Click on the “Schedule” tab.

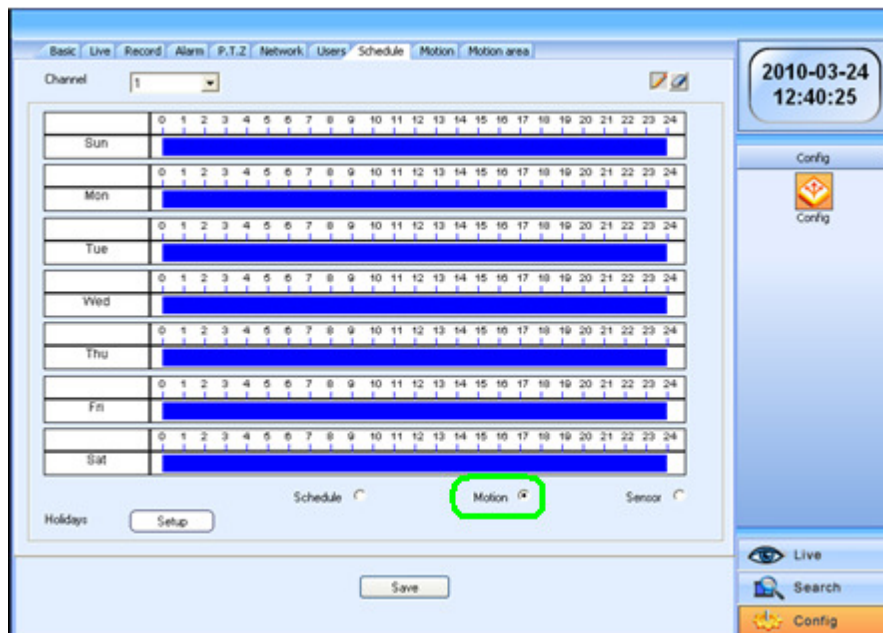


QSDT8DP Motion Recording over the Network

STEP 11: Choose which channel(s) you want to schedule motion recording for.

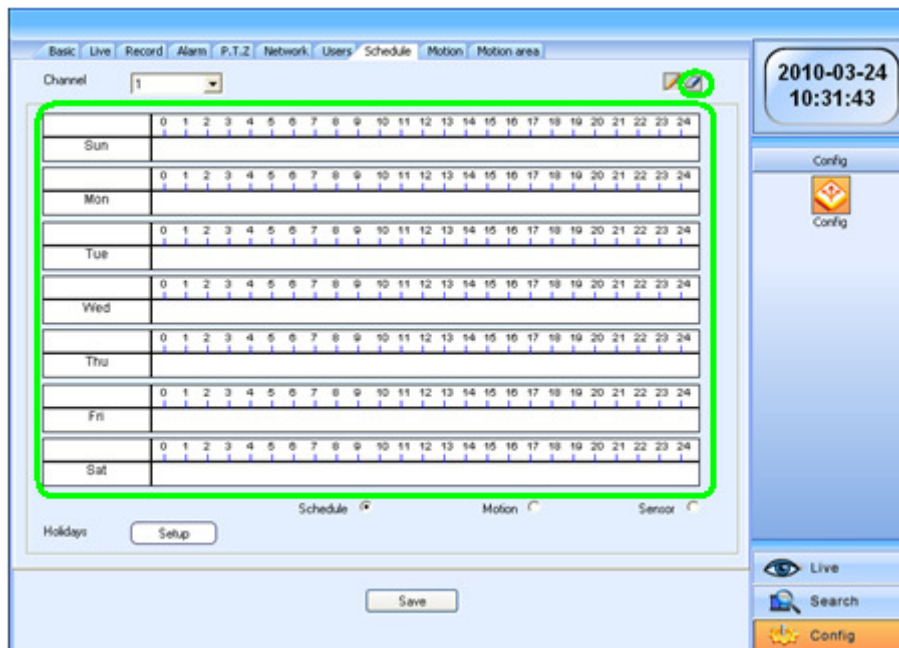


STEP 12: Click on the “Motion” option.

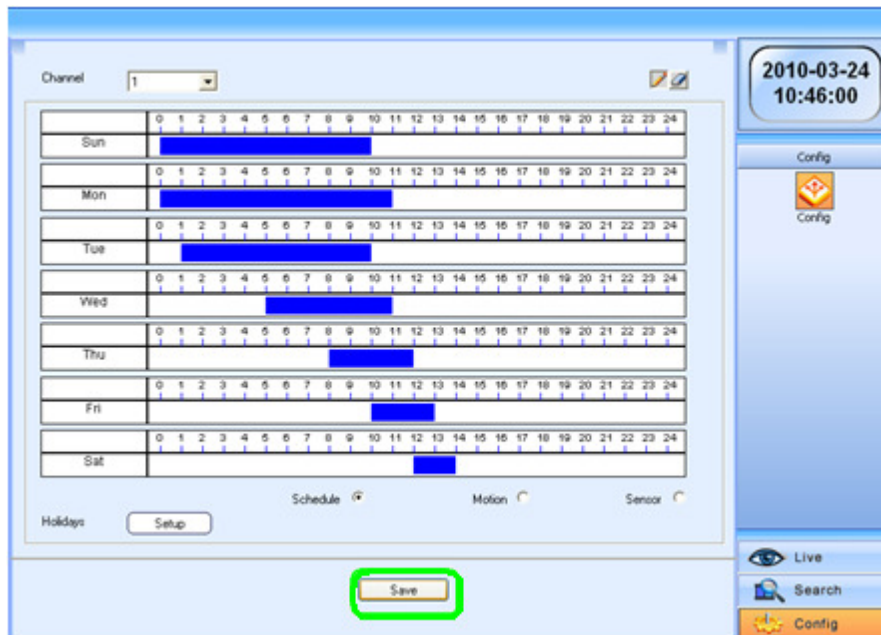


QSDT8DP Motion Recording over the Network

STEP 13: Click and drag your cursor on the schedule to set times. Click on the eraser icon to erase any mistakes you may make.

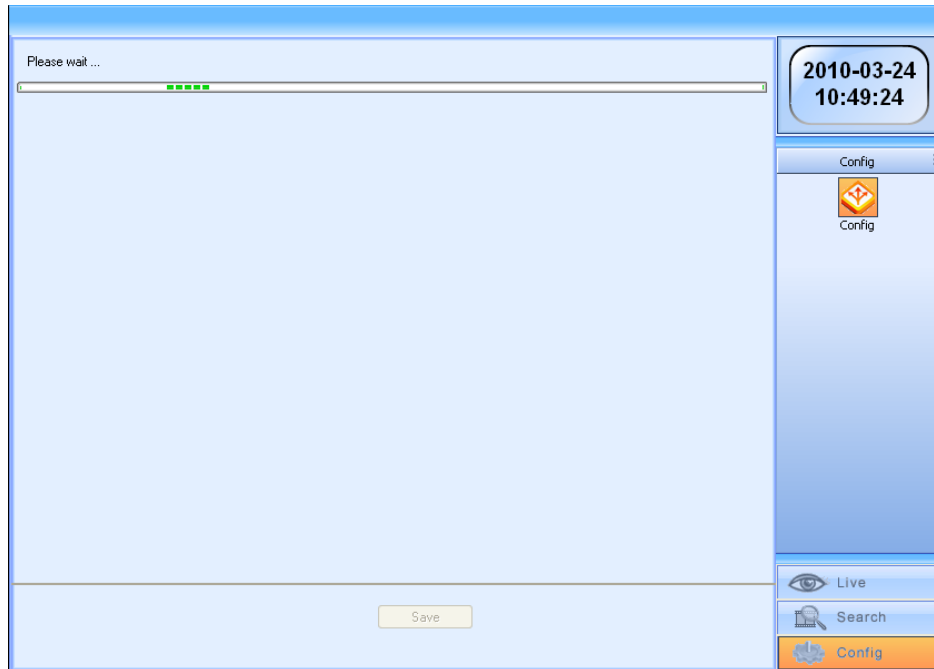


STEP 14: Click "Save" once you have created a schedule that you like.

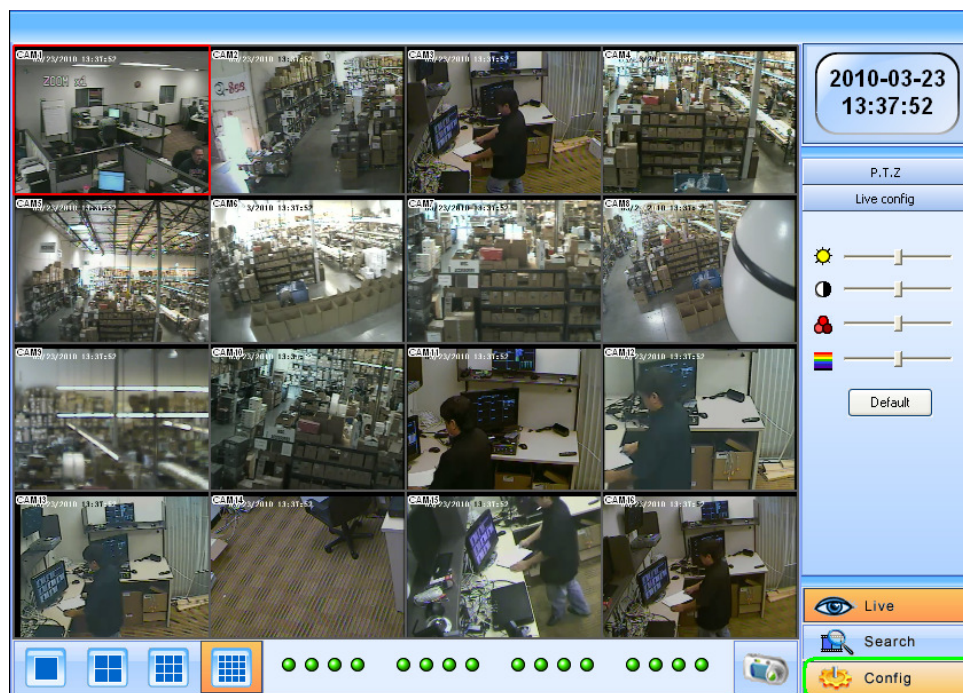


QSDT8DP Motion Recording over the Network

STEP 15: A progress bar will show the progress of saving your schedule.

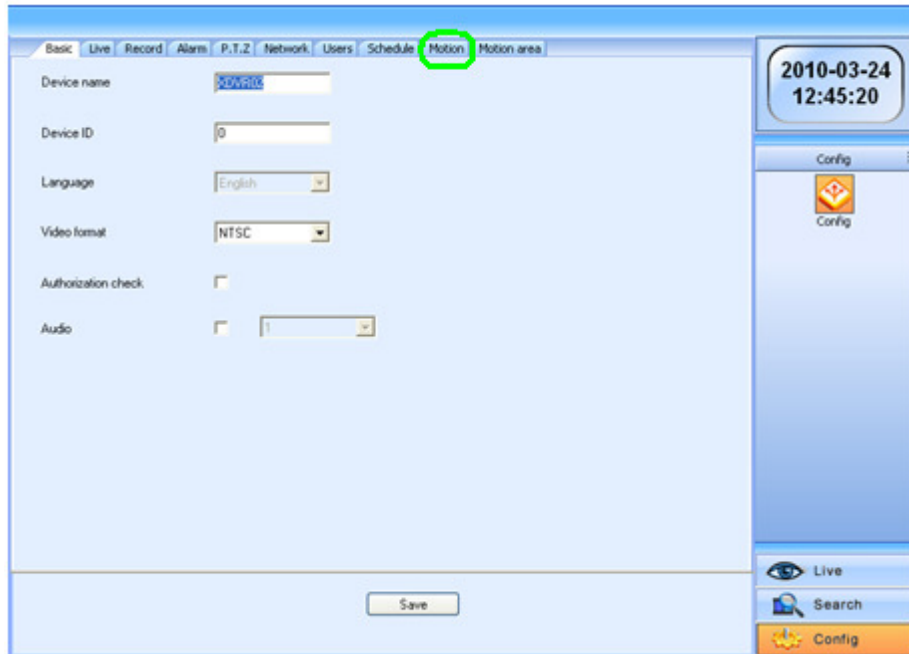


STEP 16: Click the “Config” button.

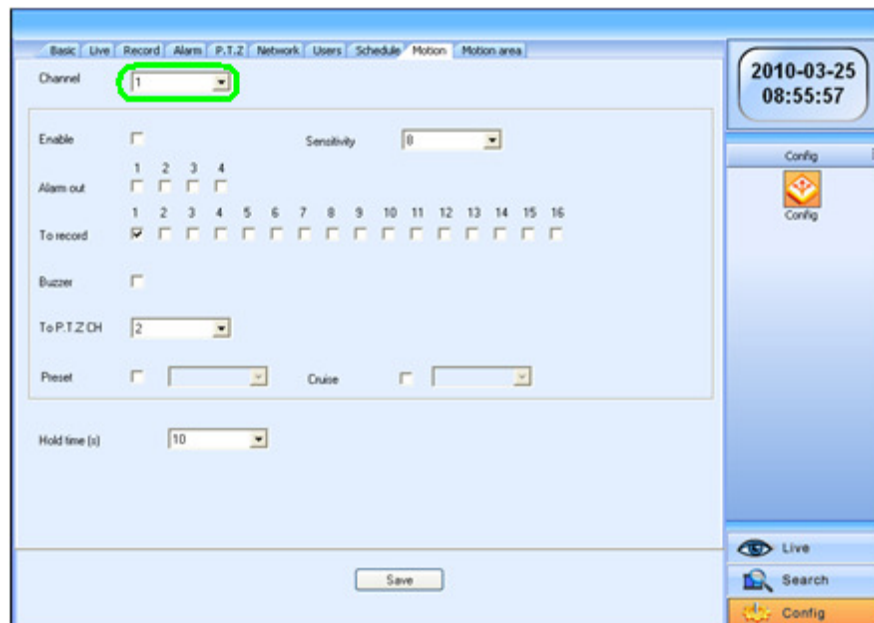


QSDT8DP Motion Recording over the Network

STEP 17: Click the “Motion” tab.

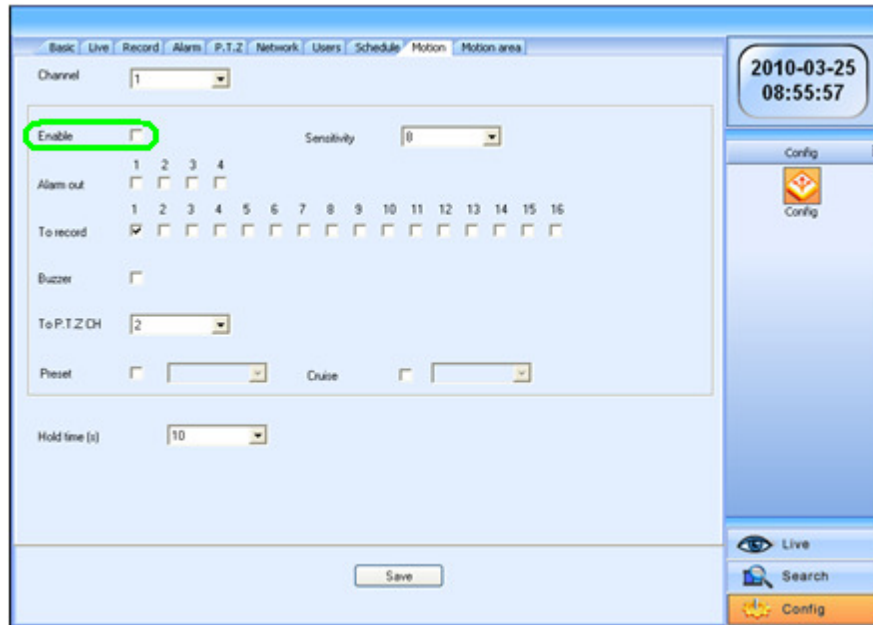


STEP 18: Select the channel(s) you wish to set up motion detection for.

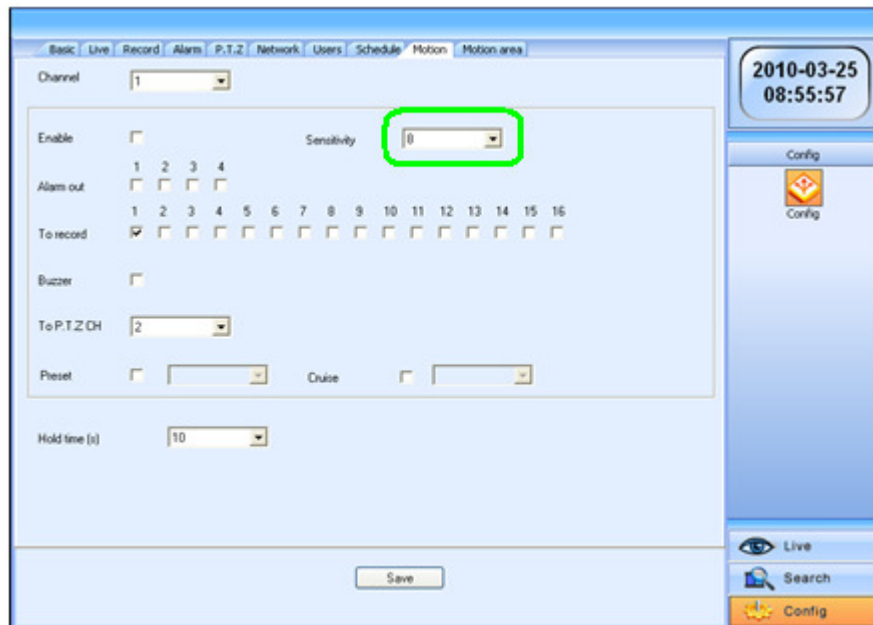


QSDT8DP Motion Recording over the Network

STEP 19: Check the box next to “Enable”.

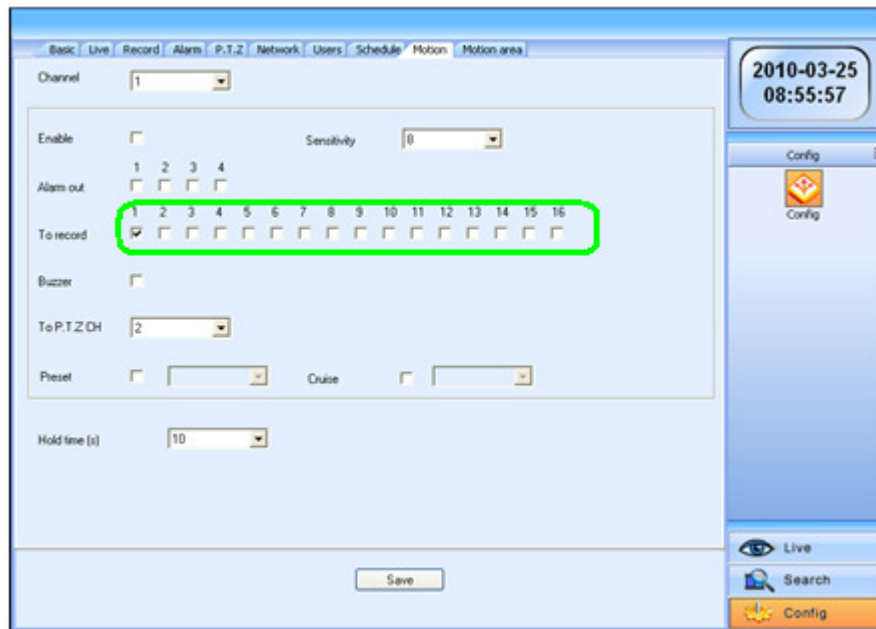


STEP 20: Set the sensitivity of the motion detection.

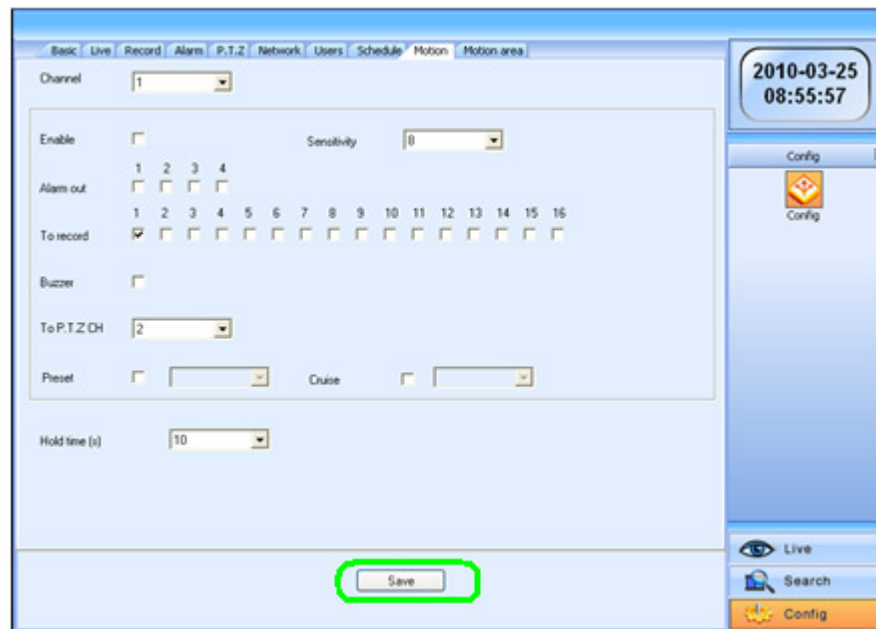


QSDT8DP Motion Recording over the Network

STEP 21: Check the cameras to record once motion detection is triggered.

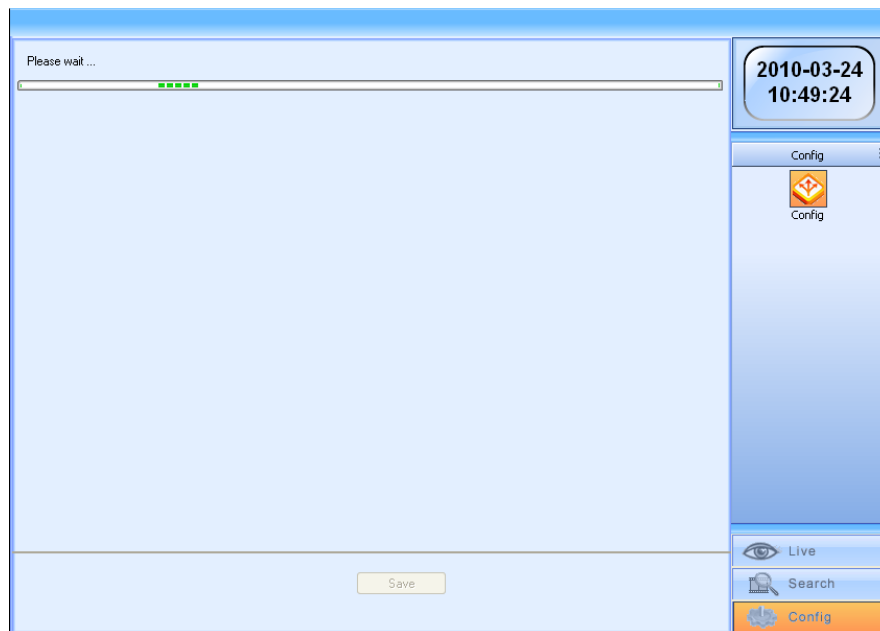


STEP 22: Click the “Save” button.

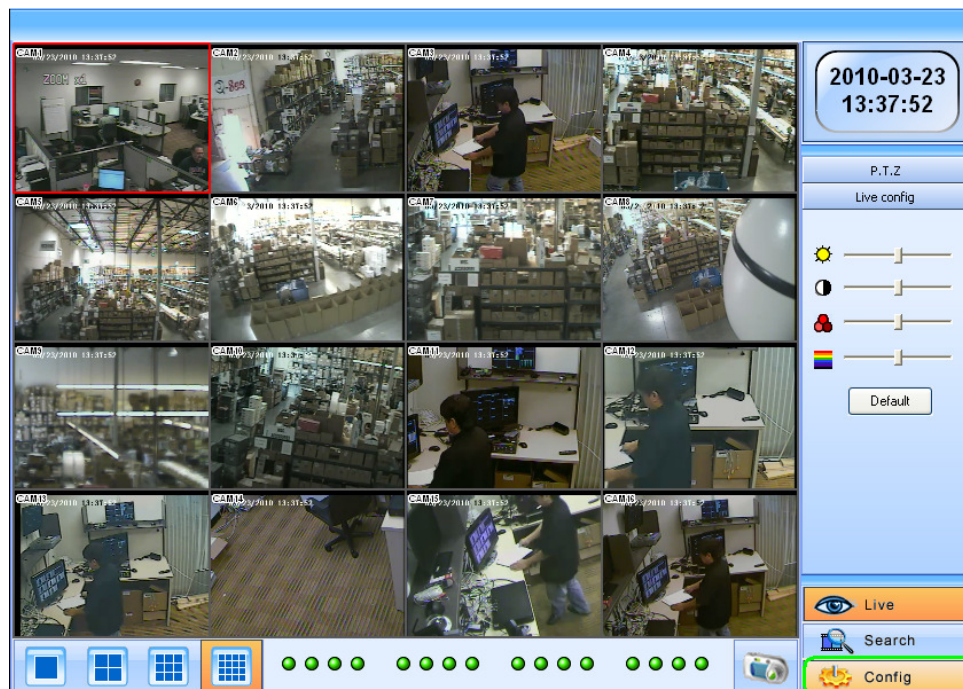


QSDT8DP Motion Recording over the Network

STEP 23: A progress bar will show the progress of saving your motion detection settings.

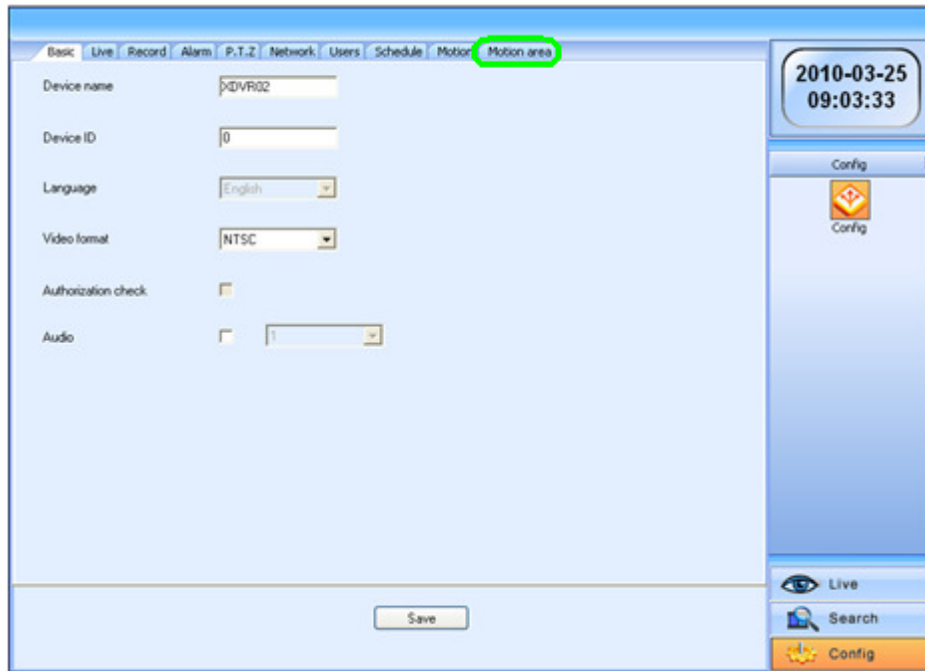


STEP 24: Click the “Config” button.

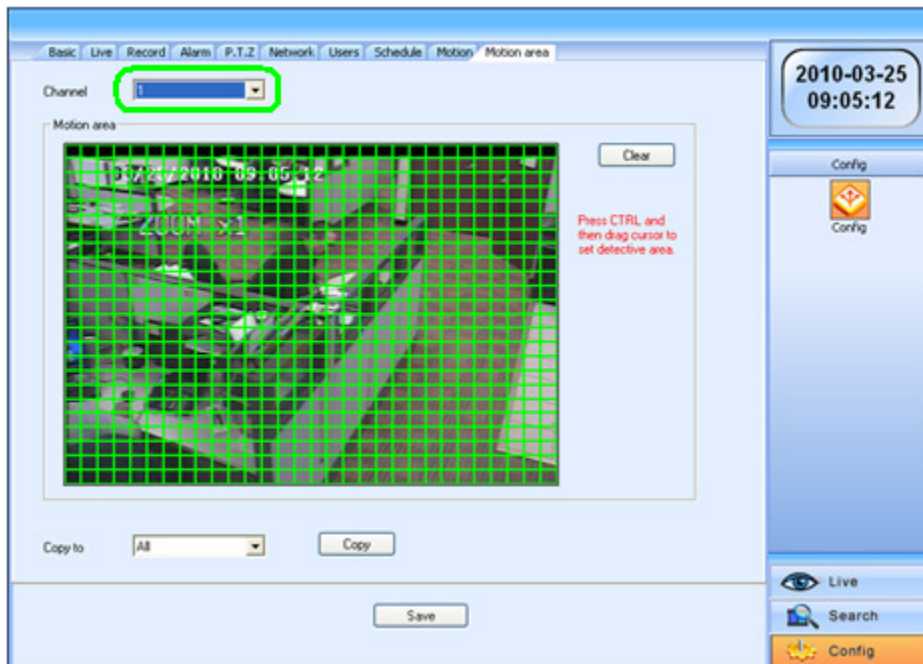


QSDT8DP Motion Recording over the Network

STEP 25: Click the “Motion area” tab.

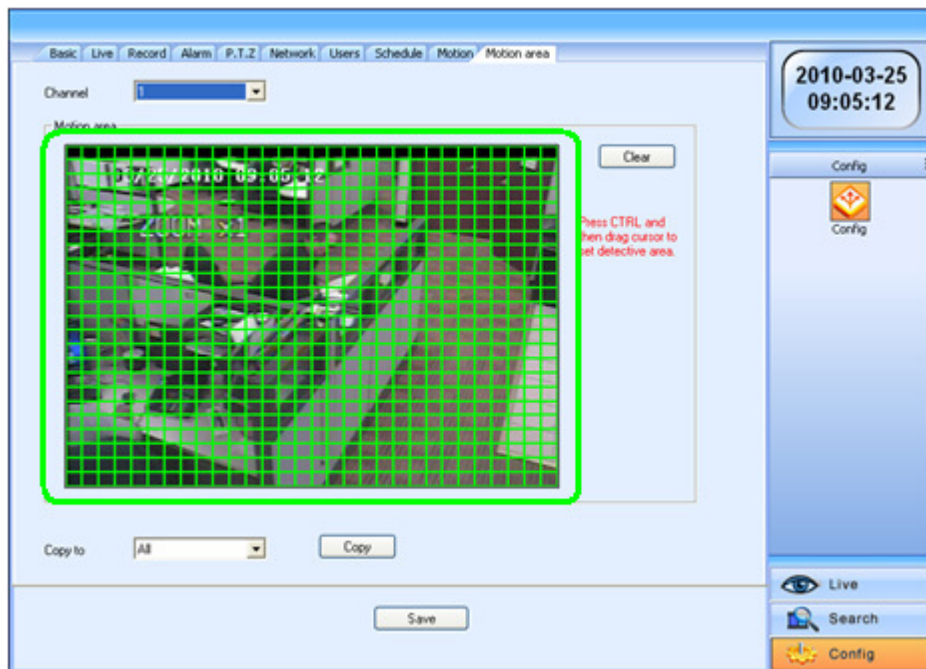


STEP 26: Set which channel you want to set up the motion detection area for.

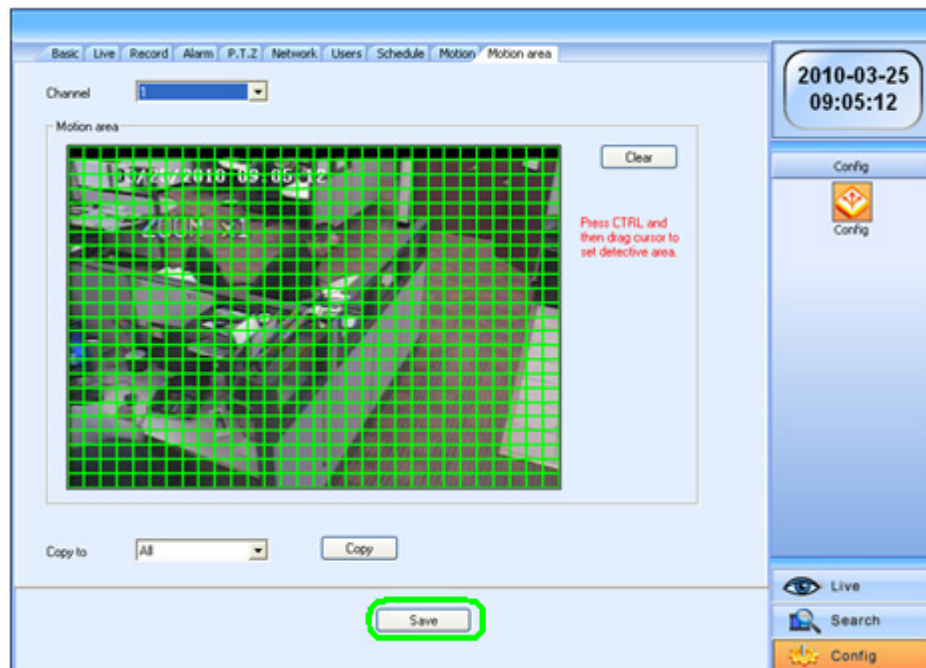


QSDT8DP Motion Recording over the Network

STEP 27: Press the Control button and click and drag the cursor to set the motion detection area.



STEP 28: Click the “Save” button.



QSDT8DP Motion Recording over the Network

STEP 29: A progress bar will show the progress of saving your motion detection settings.

