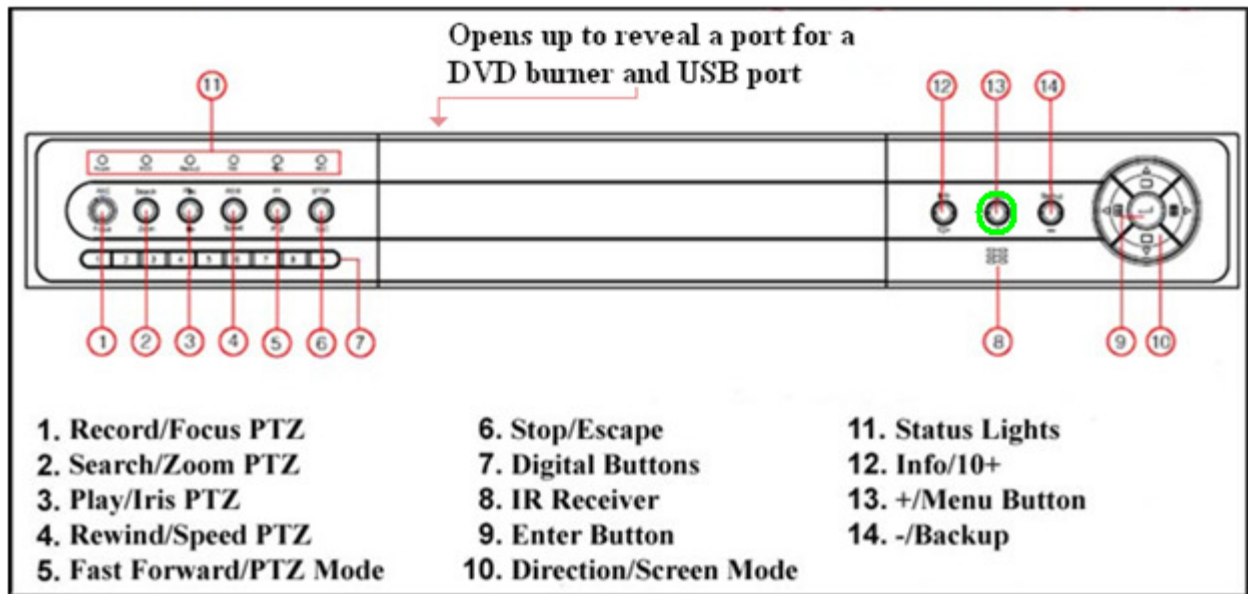
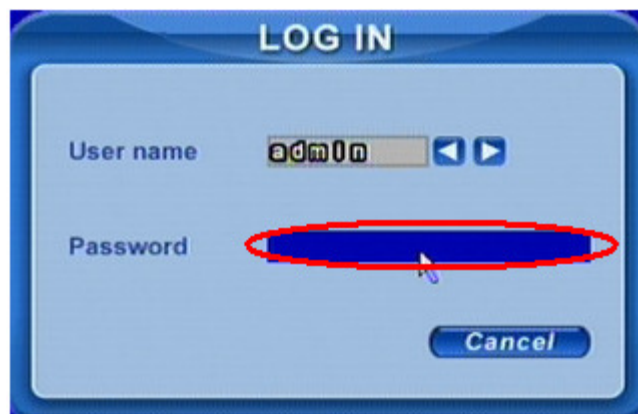


QSDT8DP Changing Date and Time

STEP 1: Press the “Menu” Button on the front DVR panel

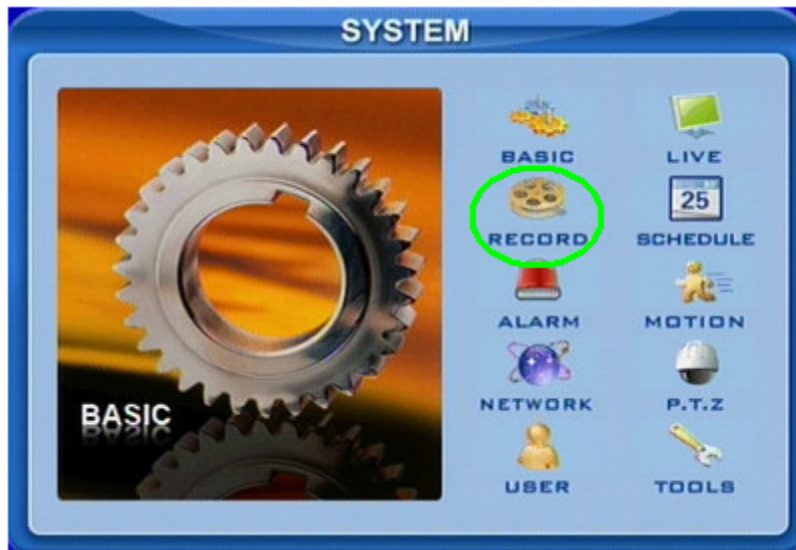


STEP 2: Enter Login information to access the System menu. Default User name is “admin” and default Password is “123456” (this can be punched in on the front panel of the DVR using the digital buttons and direction keys).



QSDT8DP Changing Date and Time

STEP 3: Move the cursor to “Record” and press “Enter”.

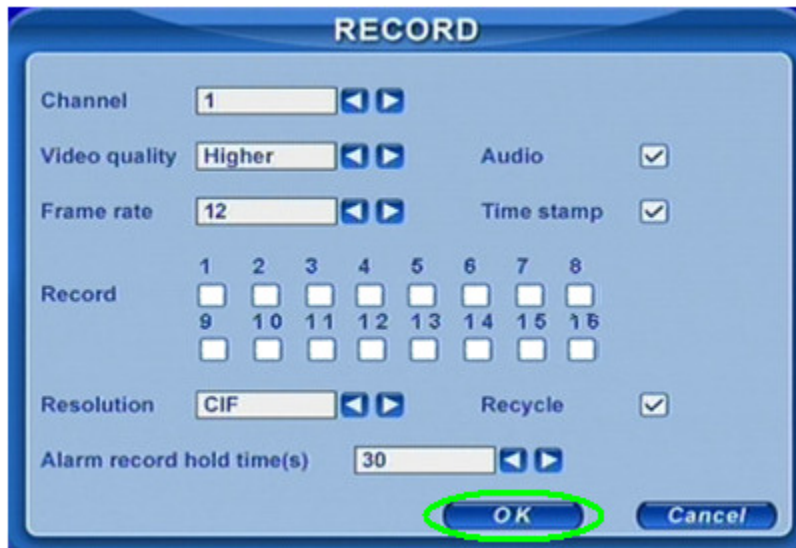


STEP 4: Remove all of the checkmarks next to “Record”. All recording must be turned off prior to changing the date and time.

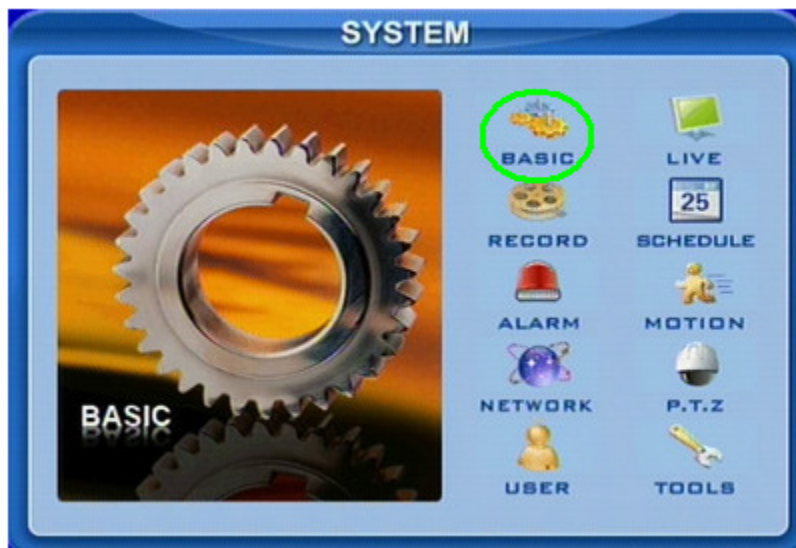


QSDT8DP Changing Date and Time

STEP 5: Move the cursor to “OK” and press “Enter”.

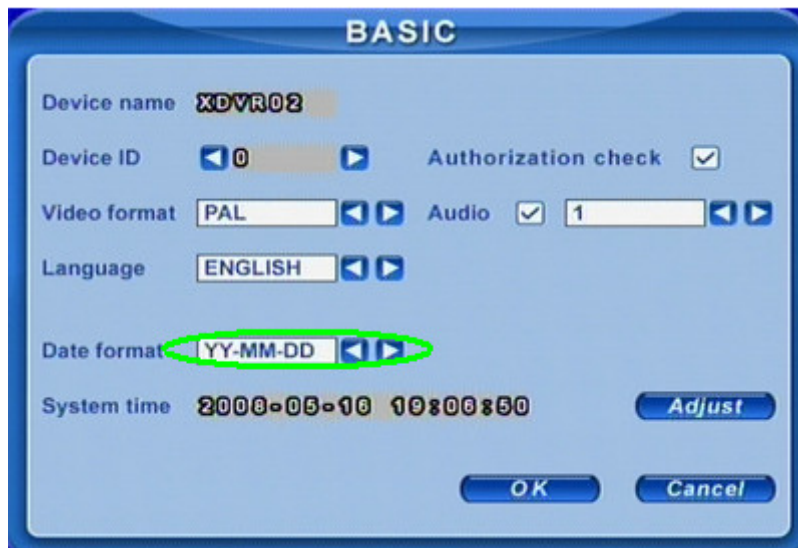


STEP 6: Move the cursor to “Basic” and press “Enter”.

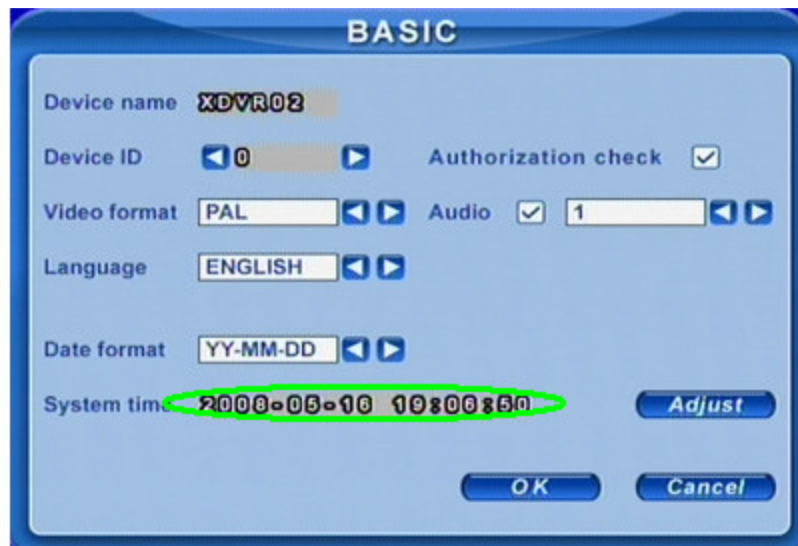


QSDT8DP Changing Date and Time

STEP 7: Move the cursor to “Date Format” and select the format you want the date to be displayed

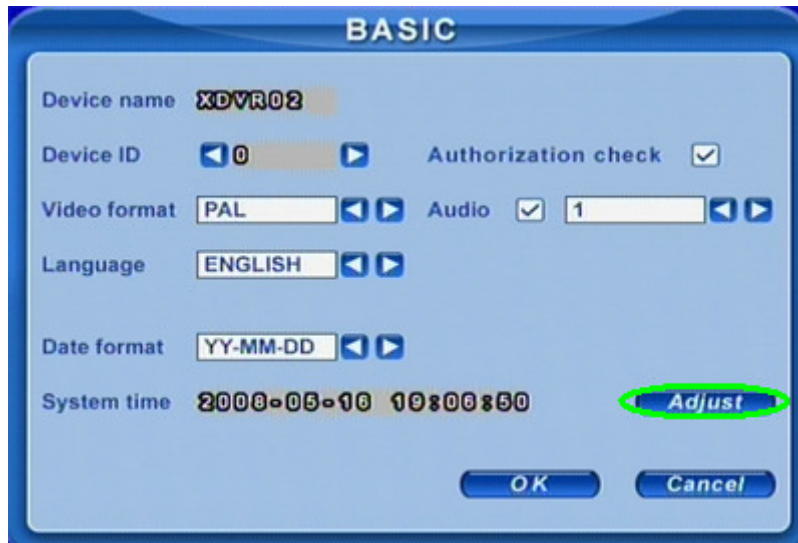


STEP 8: Move the cursor to “System time” and using the Direction Keys and the digital buttons to change the time.



QSDT8DP Changing Date and Time

STEP 9: Move the cursor to “Adjust” and press “Enter”. A window will pop up warning that some data will be lost if the change is made; if you wish to continue, move the cursor to “OK” and press “Enter”.



STEP 10: Move the cursor to “OK” and press “Enter”.

