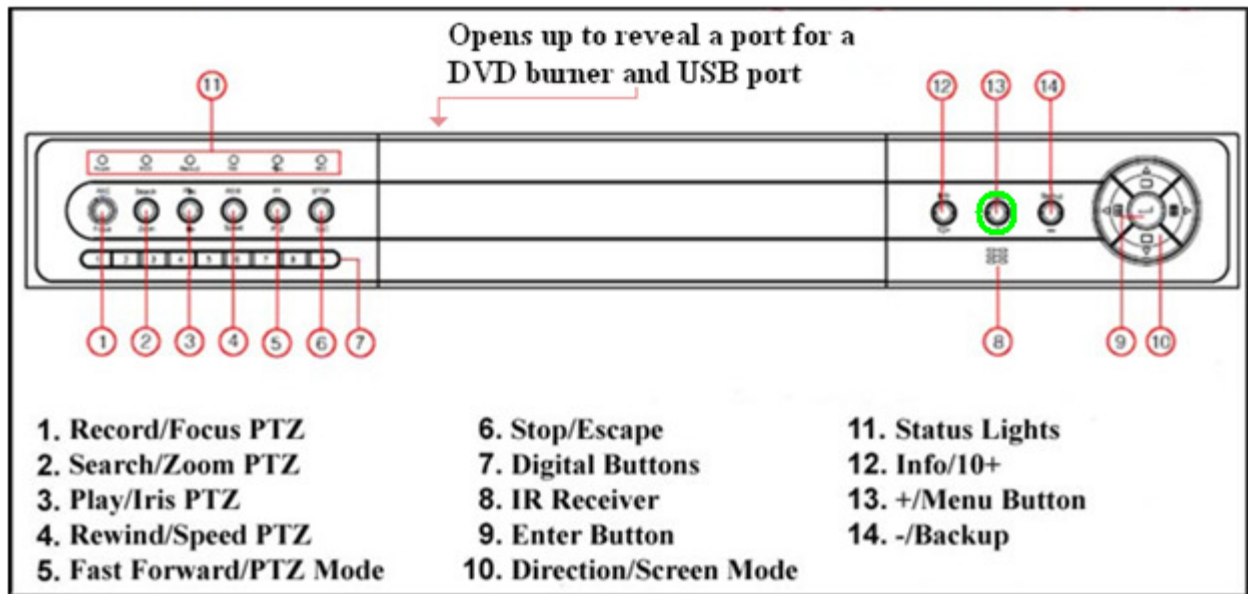
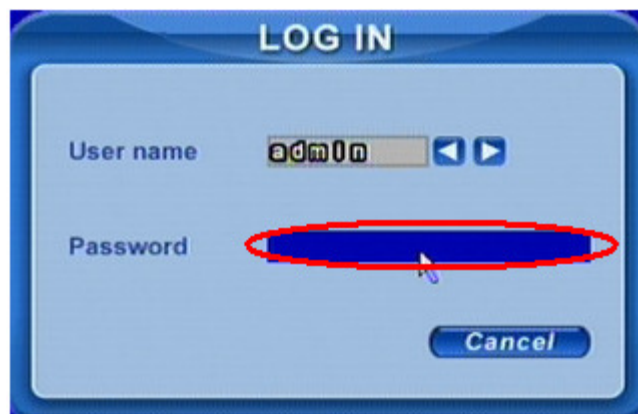


QSDT8DP Activating and Changing Passwords

STEP 1: Press the “Menu” Button on the front DVR panel

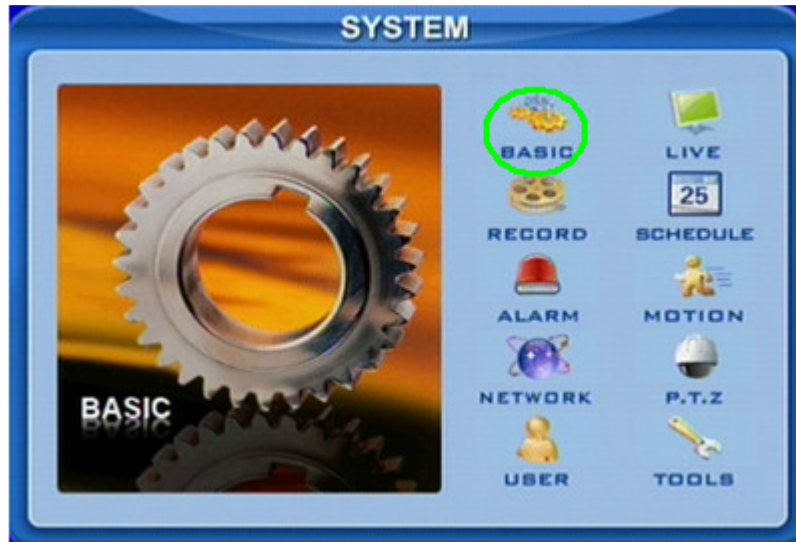


STEP 2: Enter Login information to access the System menu. Default User name is “admin” and default Password is “123456” (this can be punched in on the front panel of the DVR using the digital buttons and direction keys).

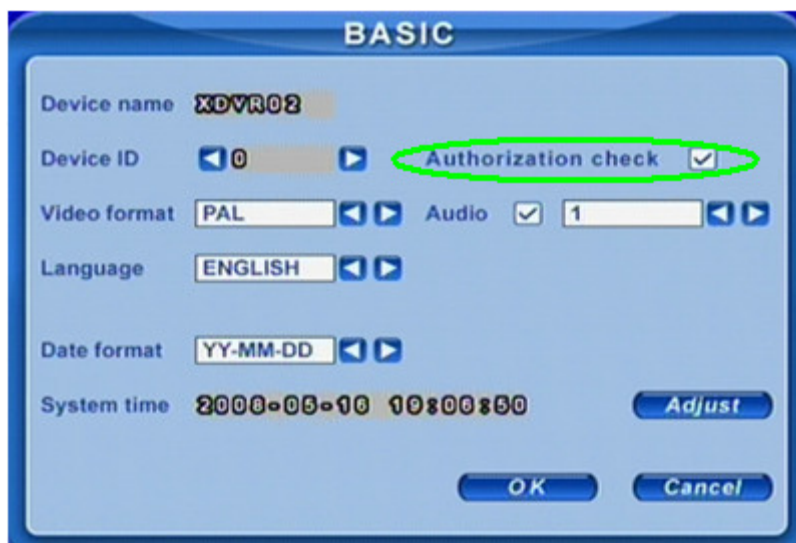


QSDT8DP Activating and Changing Passwords

STEP 3: Move the cursor to “BASIC” and press “Enter”.

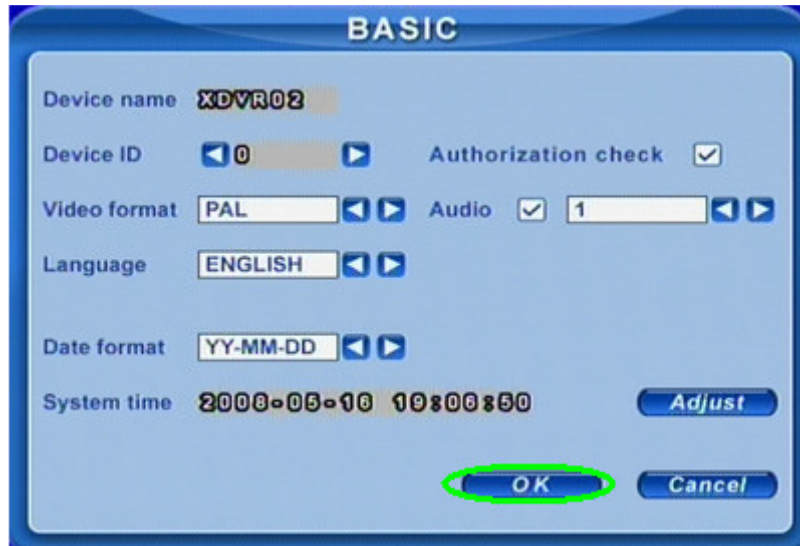


STEP 4: Move the cursor to the box next to “Authorization check” and put a checkmark in the box if one is not already there.

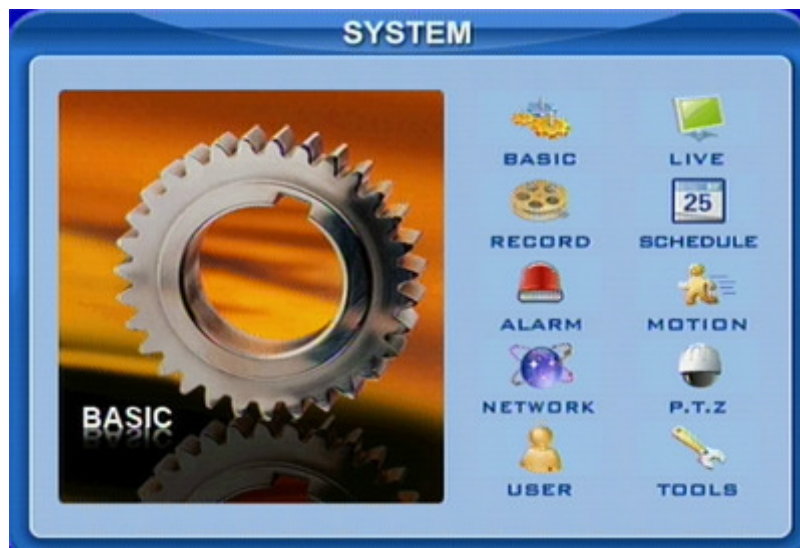


QSDT8DP Activating and Changing Passwords

STEP 5: Move the cursor to “OK” and press “Enter”.

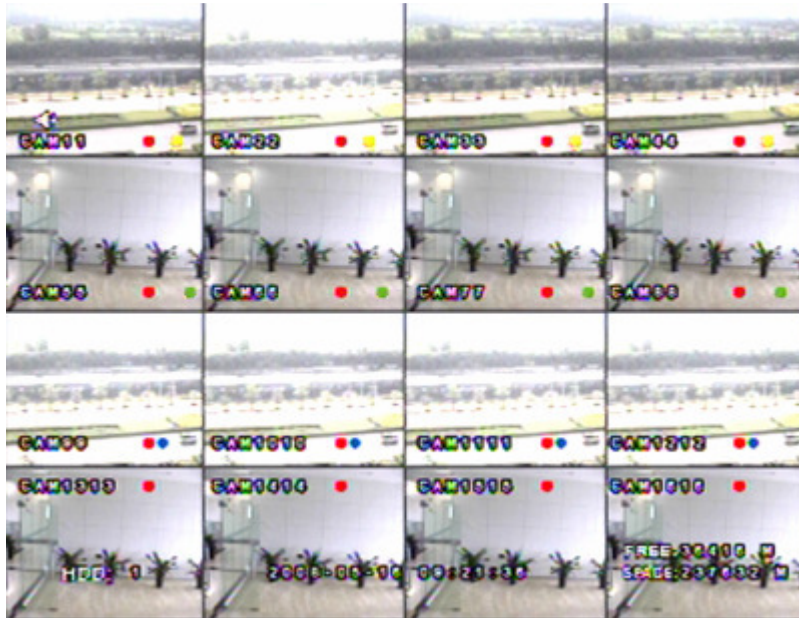


STEP 6: You will return to the system menu. Press the escape button.



QSDT8DP Activating and Changing Passwords

STEP 7: You should see the display screen; press the “Enter” button.



STEP 8: A control bar should appear just like the picture below.

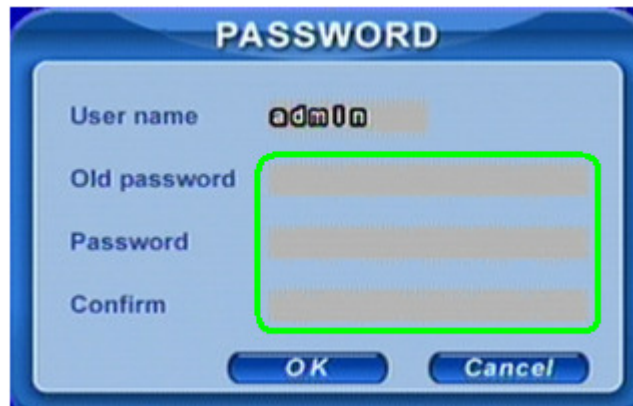


QSDT8DP Activating and Changing Passwords

STEP 9: Move the cursor to the icon shaped like a key and press “Enter”.



STEP 10: Enter in the requested information as shown below.

A "PASSWORD" dialog box with a blue border. It contains four input fields: "User name" with "admin" entered, "Old password", "Password", and "Confirm". The "Password" and "Confirm" fields are highlighted with a green border. At the bottom are "OK" and "Cancel" buttons.

STEP 11: Move the cursor to the “OK” button and press “Enter”.

The same "PASSWORD" dialog box as in Step 10, but with the "OK" button highlighted by a green circle.