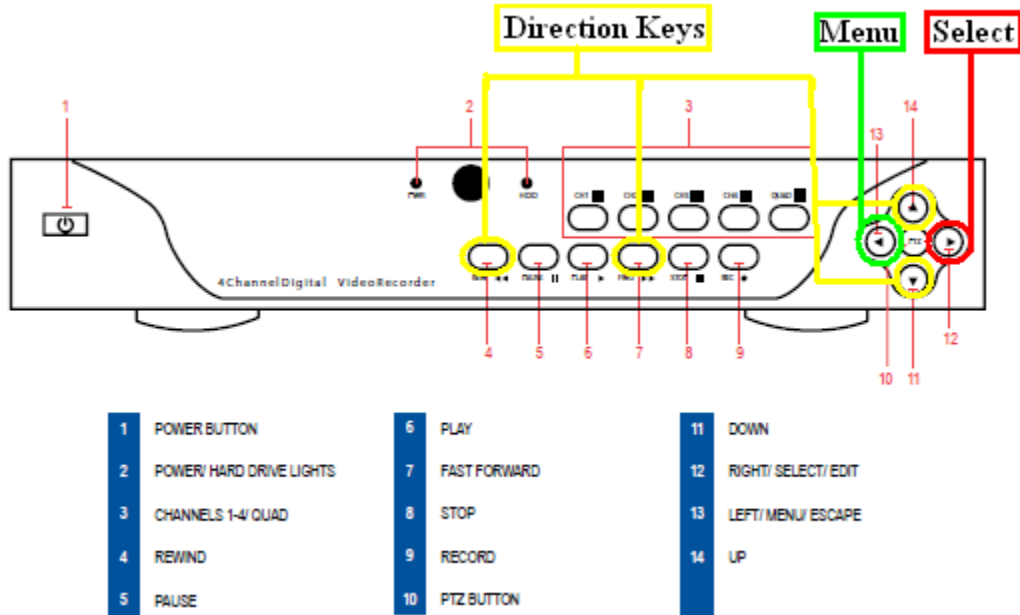


# QSD9004 Smart Phone Access: Windows Mobile

Prior to setting up your phone to view your cameras, your DVR must be set up for remote viewing.

**STEP 1:** Press the Menu button on the Front Panel of the DVR.



**STEP 2:** Move the cursor to “Devices” and press “Select”.

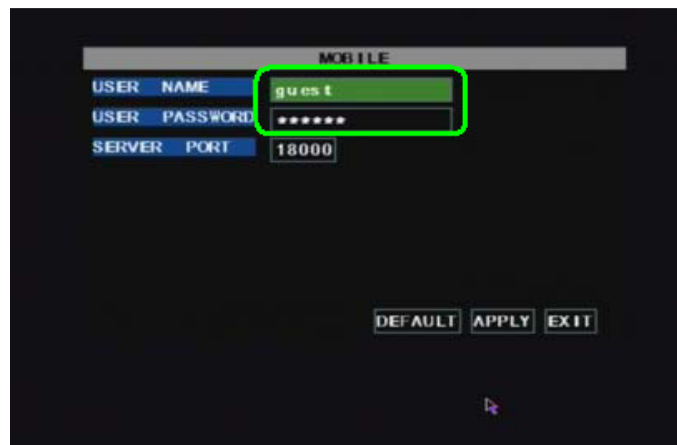


## QSD9004 Smart Phone Access: Windows Mobile

**STEP 3:** Move the cursor to “Mobile” and press “Select”.



**STEP 4:** Enter in the login information.



**STEP 5:** Set the server port to “18600”. (Note: you must forward this port value to your router).



## QSD9004 Smart Phone Access: Windows Mobile

**STEP 6:** Move the cursor to “APPLY” and press “Select”.

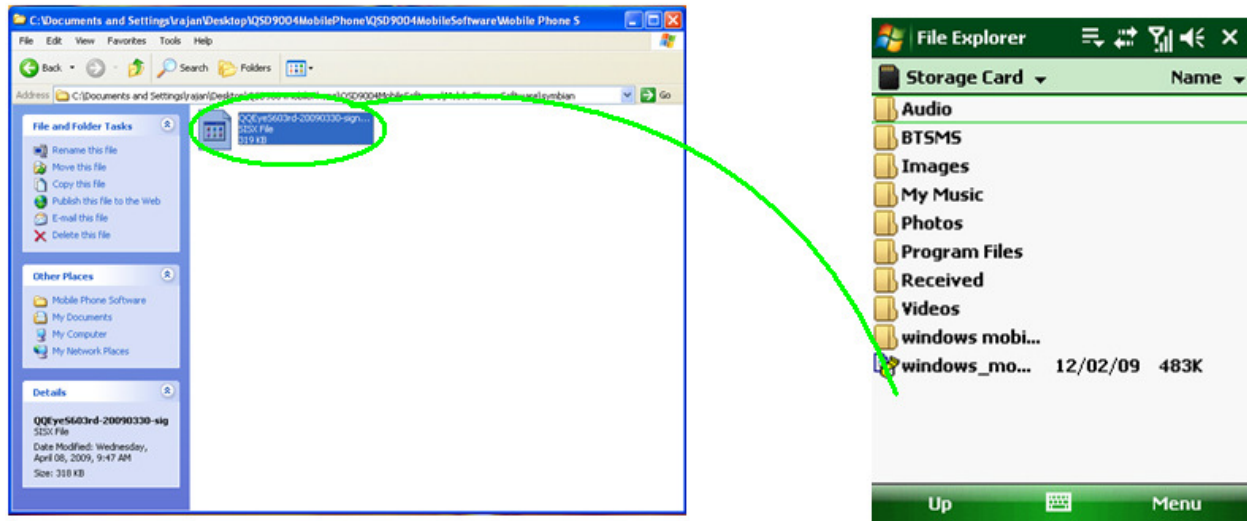


**STEP 7:** Move the cursor to “EXIT” and press “Select”.

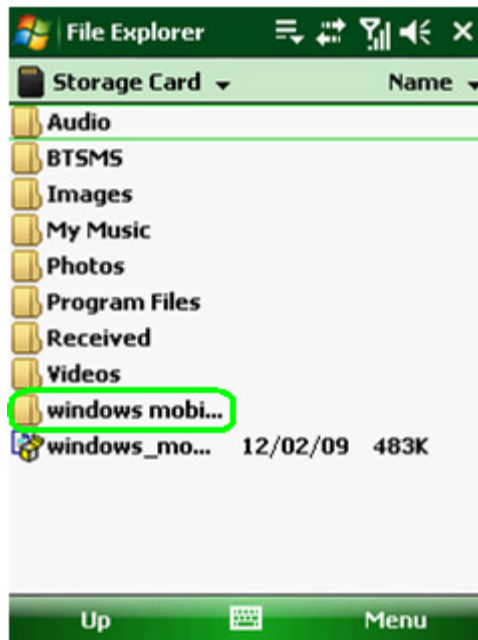


## QSD9004 Smart Phone Access: Windows Mobile

**STEP 8:** Install the software that came with your DVR and copy the “QQeye.CAB” file to the mobile phone. You can either physically connect your phone’s memory card to do this or use a Bluetooth connection.

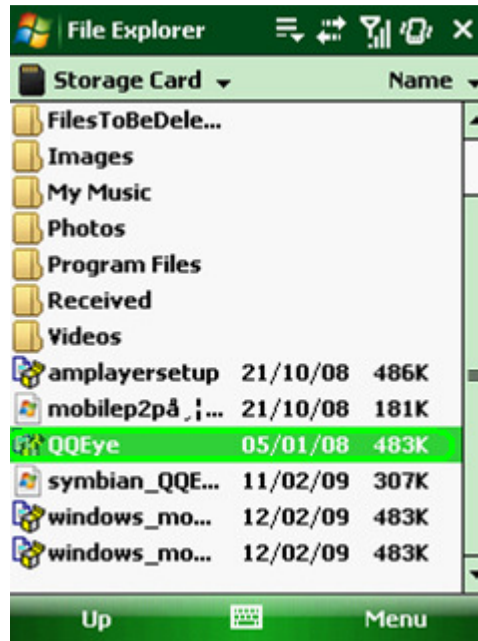


**STEP 9:** Open the windows mobile folder to access the file within.

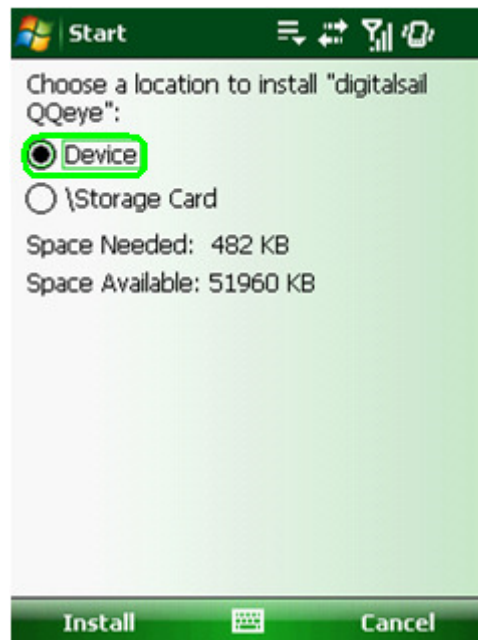


## QSD9004 Smart Phone Access: Windows Mobile

**STEP 10:** Open the QQEye File.

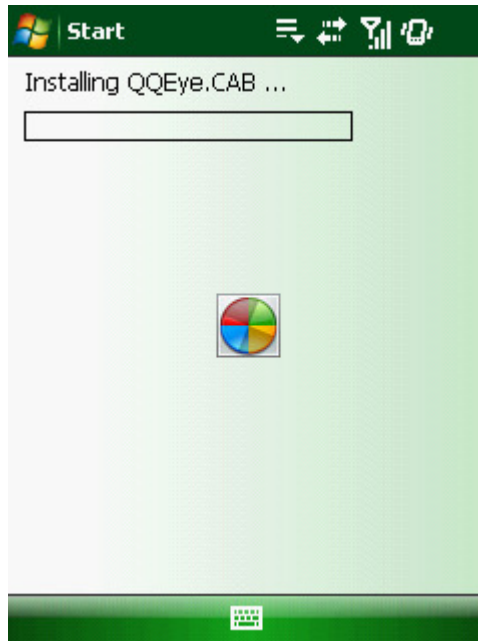


**STEP 11:** Select "Device" and click on "Install".



## QSD9004 Smart Phone Access: Windows Mobile

**STEP 12:** QQEye will start to install on your phone.



**STEP 13:** Once QQeye is done installing, go to the programs section on your phone and open the QQeye application.

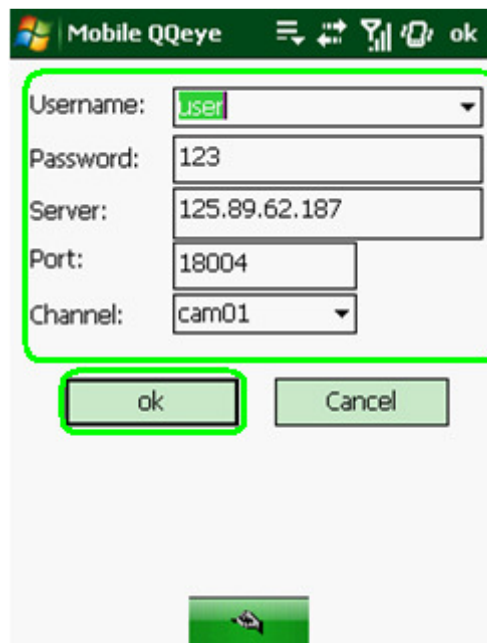


## QSD9004 Smart Phone Access: Windows Mobile

**STEP 14:** Click on “setting”.

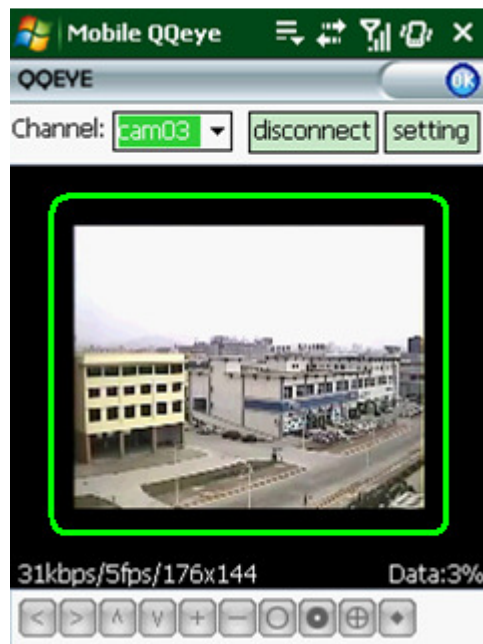


**STEP 15:** Under “Username” and “Password”, enter the information that you entered in your DVR from Step 4. Under “Server” enter the IP address of the external IP address that your DVR is forwarded to. Under “Port”, enter the port value that you entered in Step 5. Under “Channel”, select the camera you wish to view. Once you have entered in the information, click “OK”.



## QSD9004 Smart Phone Access: Windows Mobile

**STEP 16:** Once your phone is connected to your DVR, the camera display will appear as below.



**STEP 17:** If you double click on the camera display, it will become a full screen display.

