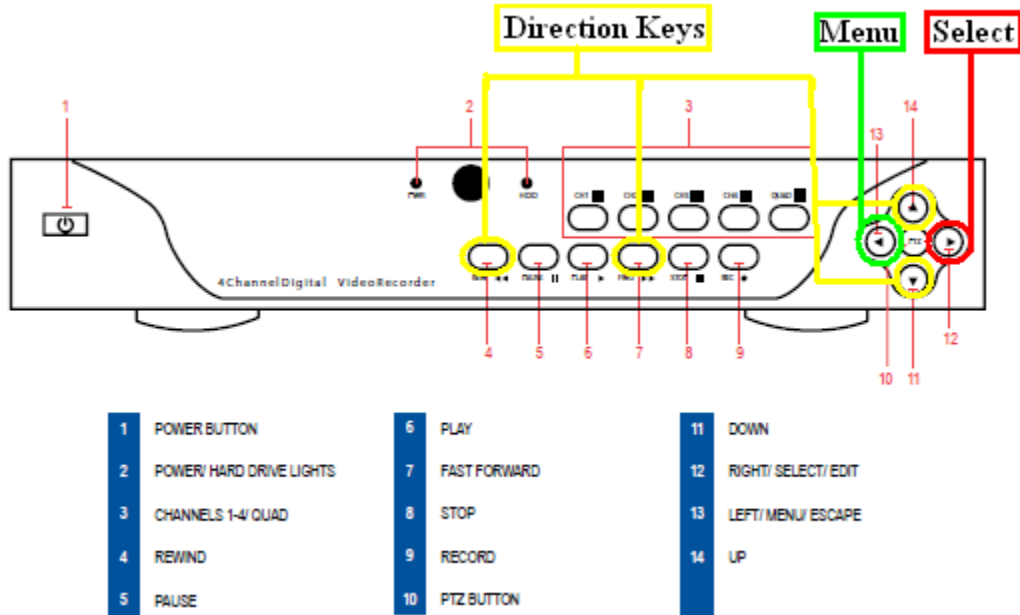


QSD9004 Smart Phone Access: Blackberry

Prior to setting up your phone to view your cameras, your DVR must be set up for remote viewing.

STEP 1: Press the Menu button on the Front Panel of the DVR.



STEP 2: Move the cursor to “Devices” and press “Select”.

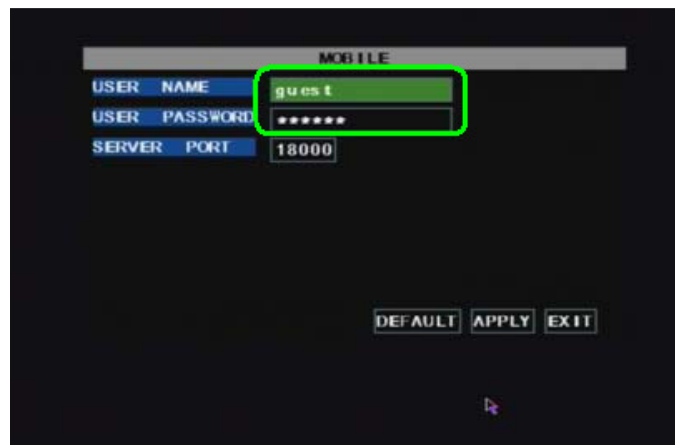


QSD9004 Smart Phone Access: Blackberry

STEP 3: Move the cursor to “Mobile” and press “Select”.



STEP 4: Enter in the login information.

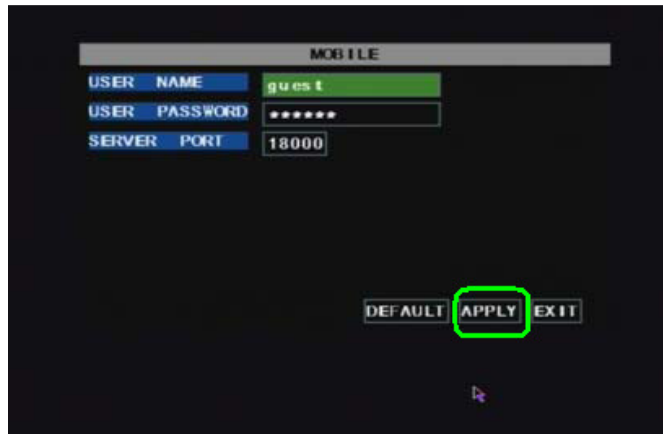


STEP 5: Set the server port to “18004”. (Note: you must forward this port value to your router).



QSD9004 Smart Phone Access: Blackberry

STEP 6: Move the cursor to “APPLY” and press “Select”.



STEP 7: Move the cursor to “EXIT” and press “Select”.



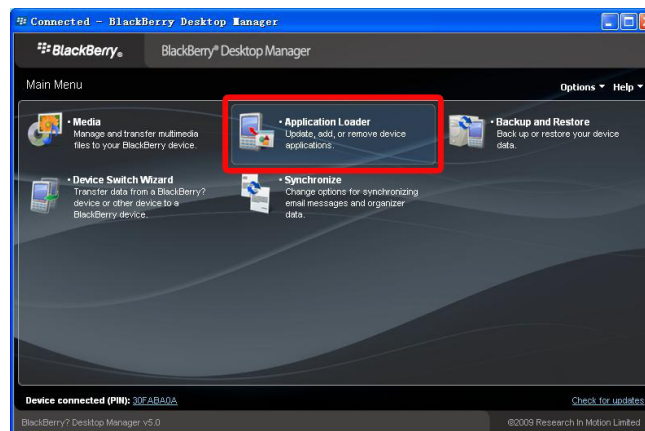
QSD9004 Smart Phone Access: Blackberry

STEP 8: Download and unzip the BPlayer application. (you can find the files at <http://q-see.com/files/software/BBappR.zip>)

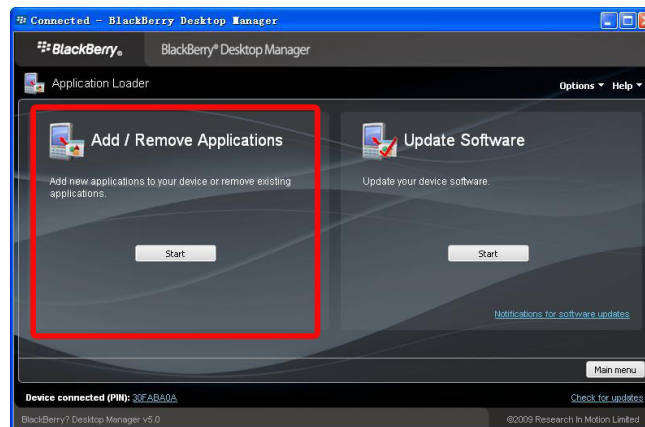
STEP 9: For the next steps you will need the Blackberry Desktop Manager to be installed on your desktop. (you can find the files at <http://na.blackberry.com/eng/services/desktop/>)

STEP 10: Connect your Blackberry phone to your computer with a USB cable. If your Blackberry Desktop Manager starts searching for updates, click “Cancel”.

STEP 11: Select the “Application Loader”.

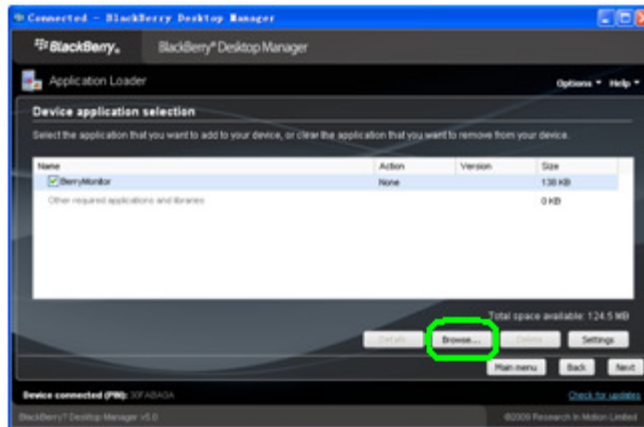


STEP 12: Click “Start” under “Add/Remove Applications”.

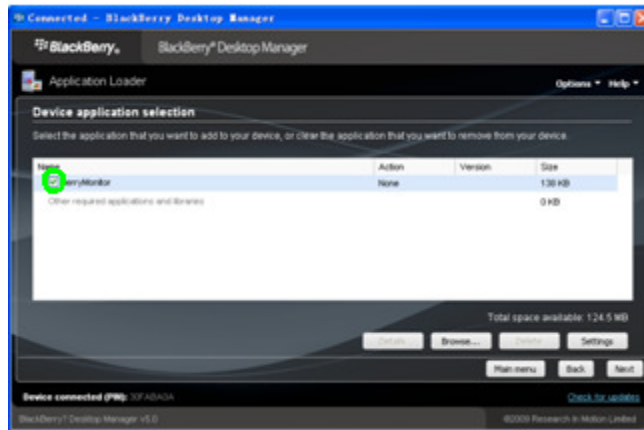


QSD9004 Smart Phone Access: Blackberry

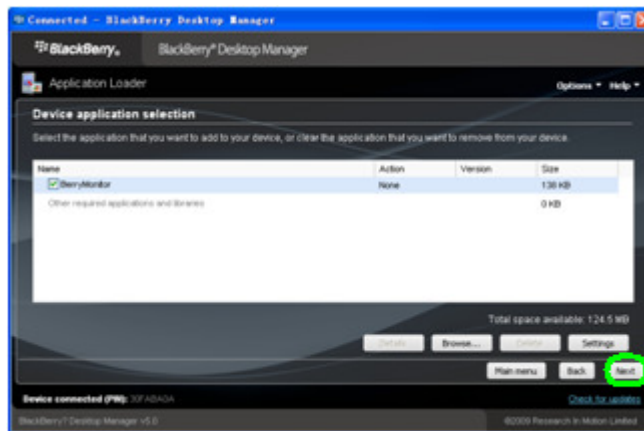
STEP 13: Click “Browse” and locate the .alx file you downloaded in step 8.



STEP 14: Check the box next to Berry Monitor.

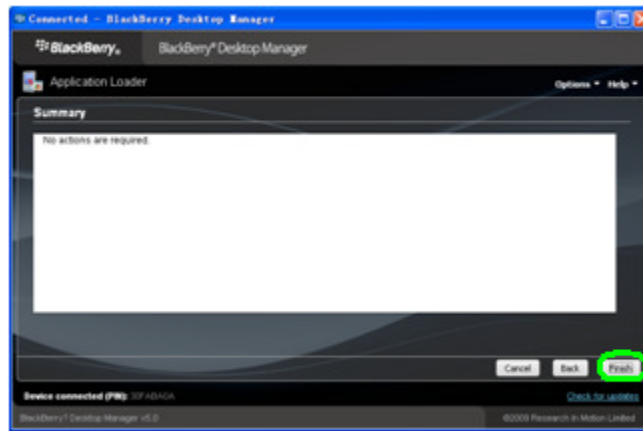


STEP 15: Click next and start the downloading process.

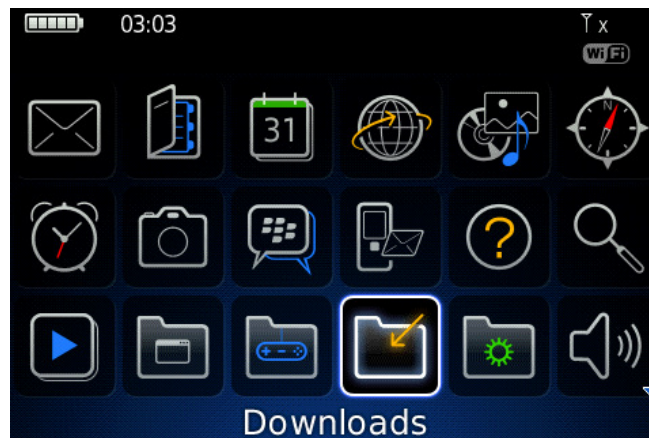


QSD9004 Smart Phone Access: Blackberry

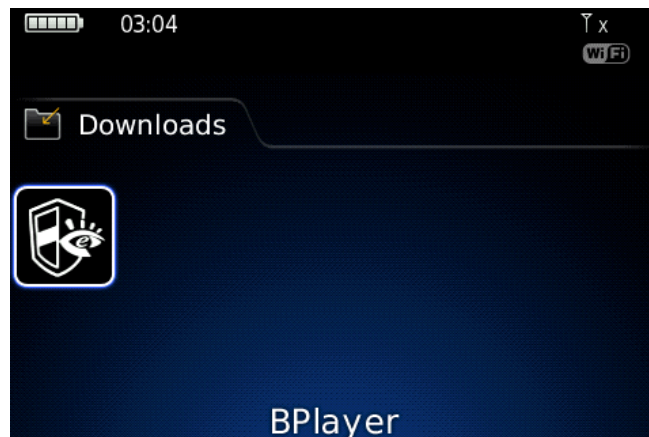
STEP 16: Click the “Finish” button once the program has been downloaded to your phone.



STEP 17: Unplug your Blackberry from the computer. To access the BPlayer, click on the “Downloads” folder on your phone.



STEP 18: Select the “BPlayer” file.

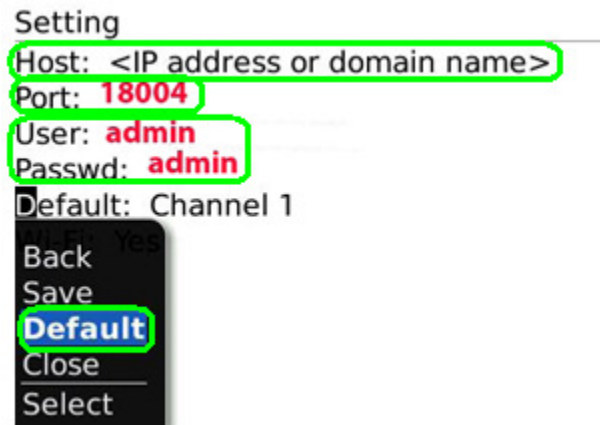


QSD9004 Smart Phone Access: Blackberry

STEP 19: Click the “Settings” button.



STEP 20: Under “Host”, input the external IP address of your router or the local IP address. Under “Port”, input the port you forwarded to your router. Under “User” and “Password”, enter the login information from your DVR.



STEP 21: Under “Channel Select”, select the channel you wish to view.



QSD9004 Smart Phone Access: Blackberry

STEP 22: Under “Wi-Fi”, select the “Wi-Fi” setting if you wish to view you cameras outside of your DVR’s network.



STEP 23: Select “Save”.



STEP 24: Your cameras will viewable on your phone.

