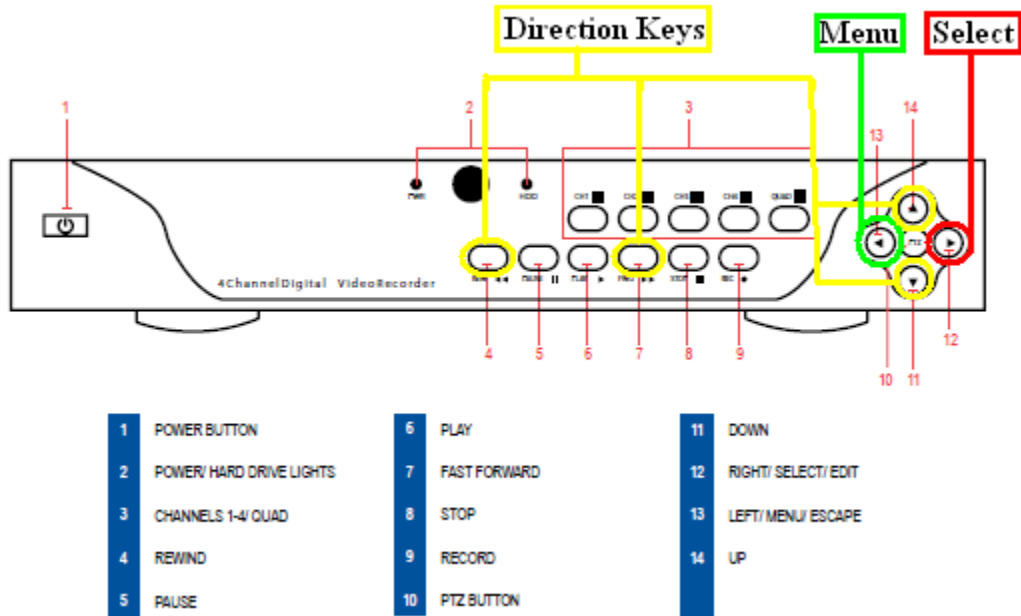


# QSD9004 Scheduled Recording

**STEP 1:** Press the Menu button on the Front Panel of the DVR

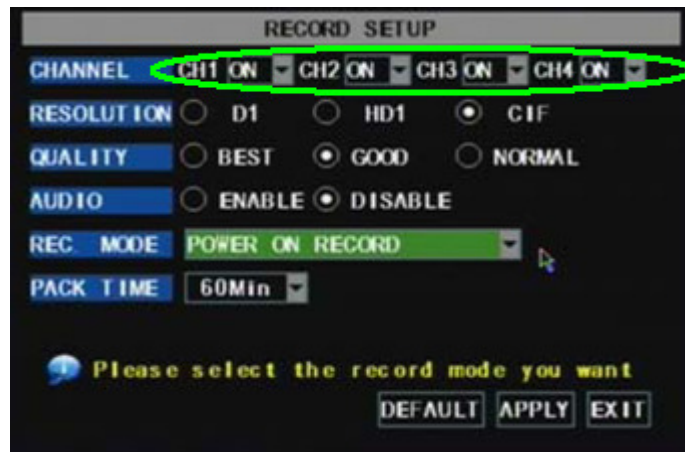


**STEP 2:** Move cursor to RECORD press the “Select” button on the front panel of the DVR.



## QSD9004 Scheduled Recording

**STEP 3:** Set which channels you want to record (switch to “ON”)

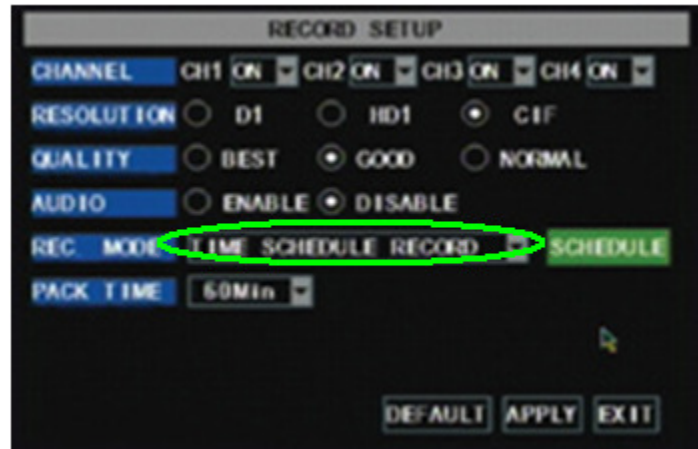


**STEP 4:** Set the pack time; this will determine how long each recorded file will be.



## QSD9004 Scheduled Recording

**STEP 5:** Set Rec. Mode to “TIME SCHEDULE RECORD”

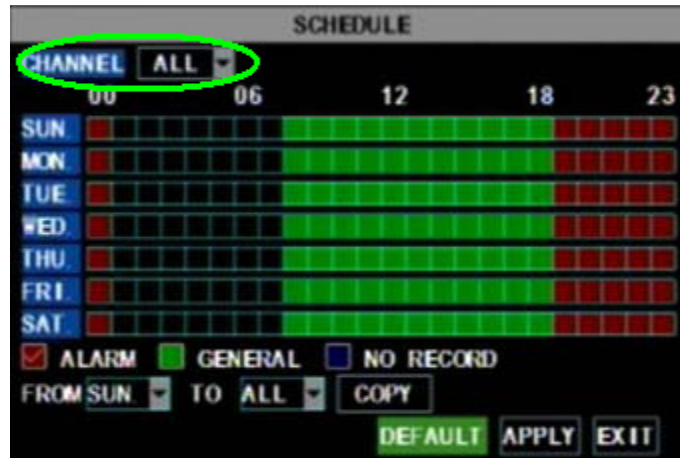


**STEP 6:** Move the cursor to “SCHEDULE” and press “Select”

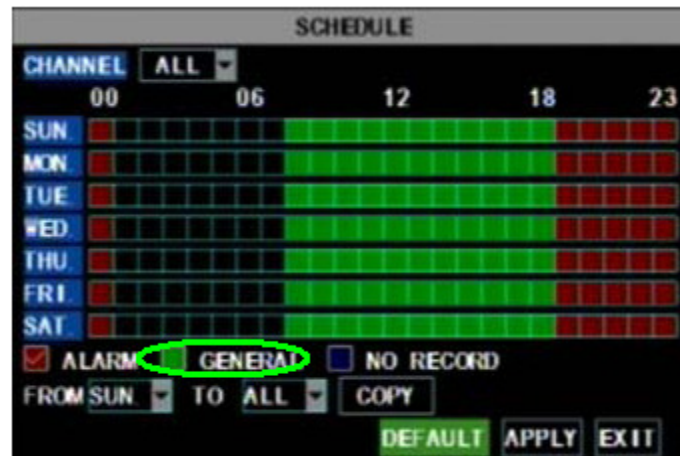


## QSD9004 Scheduled Recording

**STEP 7:** Set which channels you want to schedule under “CHANNEL”

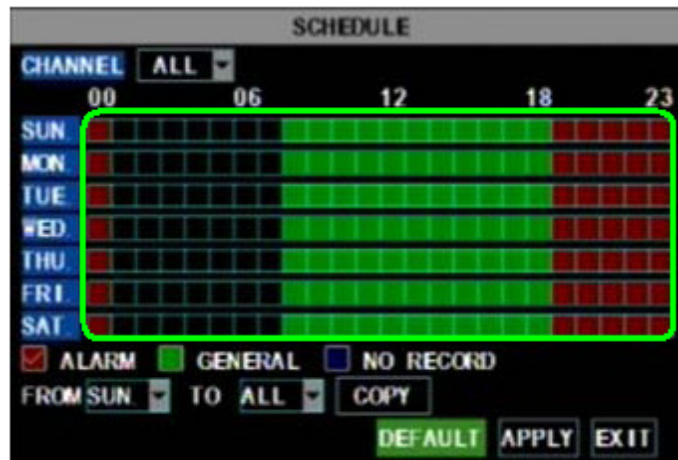


**STEP 8:** Put a checkmark in the box next “GENERAL”

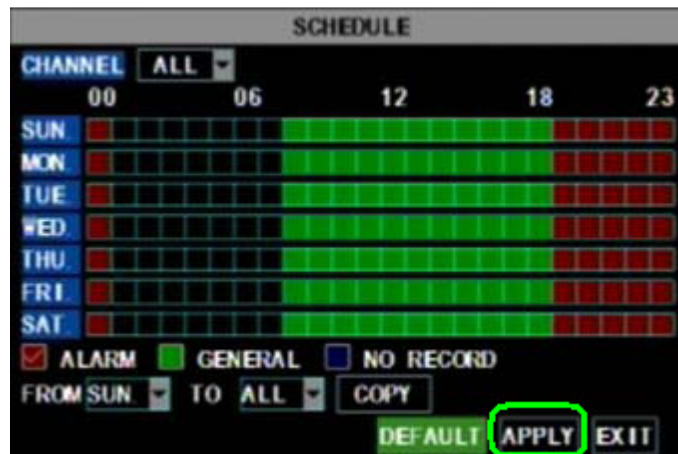


## QSD9004 Scheduled Recording

**STEP 9:** Select the desired dates and times that you want to schedule recording for



**STEP 10:** Once you have set your schedule, move the cursor to APPLY and press select.



## QSD9004 Scheduled Recording

**STEP 11:** Move cursor to APPLY and press Select.



**STEP 18:** When motion detection is activated, a small “R” will appear on the screen.

