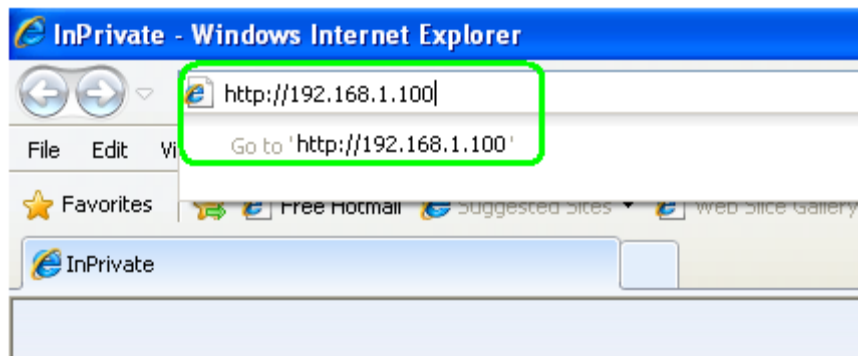


QSD9004 Scheduled Recording over the Network

STEP 1: Turn on your computer and open Internet Explorer



STEP 2: In the address bar, enter in the IP address of your DVR.



QSD9004 Scheduled Recording over the Network

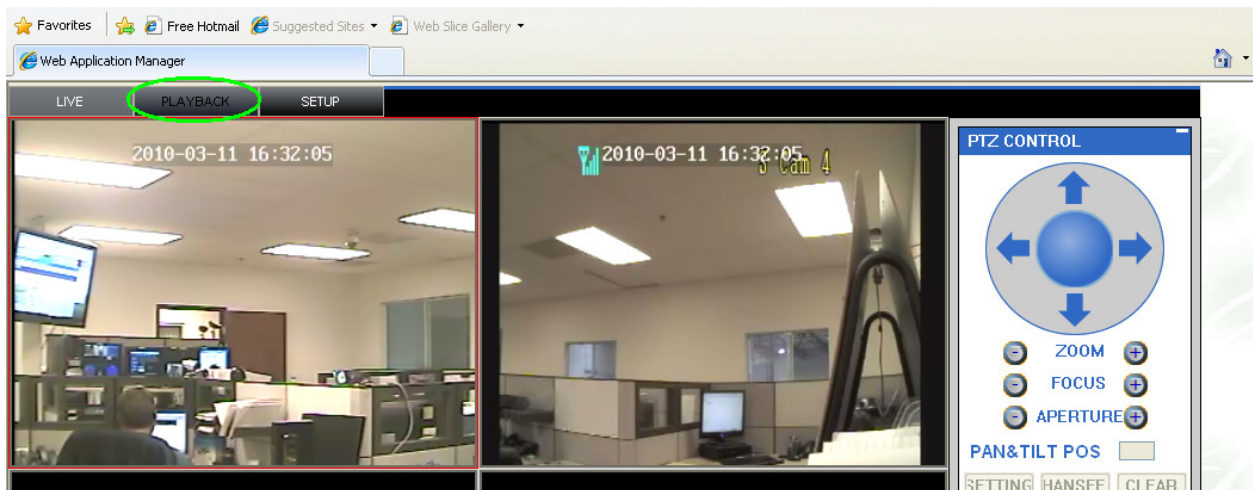
STEP 3: Click on the “LOGIN” button. If you set up a password on your DVR, enter it in the “PASSWORD” field before clicking “LOGIN”.



The image shows a "USER LOGIN" form on a blue background. The form contains the following fields and buttons:

- IP ADDRESS: 192.168.1.100
- MEDIA PORT: 9000
- PASSWORD: (empty field, highlighted with a green border)
- NETWORK: INTERNET
- Buttons: LOGIN (highlighted with a green border) and RESET

STEP 4: Click on the “REPLAY” button.



QSD9004 Scheduled Recording over the Network

STEP 5: Set all channels to “ON”

CHANNEL: CH1 ON CH2 ON CH3 ON CH4 ON

RESOLUTION: HIGHEST HIGH NORMAL

QUALITY: BEST FINE NORMAL

AUDIO: OFF

REC.MODE: TIMER RECOR

SCHEDULE

STEP 6: Click on the “SCHEDULE” button.

LIVE REPLAY SETUP LOGOUT

RECORD ALARM PTZ NETWORK SETTING HOST INFO

CHANNEL: CH1 ON CH2 ON CH3 ON CH4 ON

RESOLUTION: HIGHEST HIGH NORMAL

QUALITY: BEST FINE NORMAL

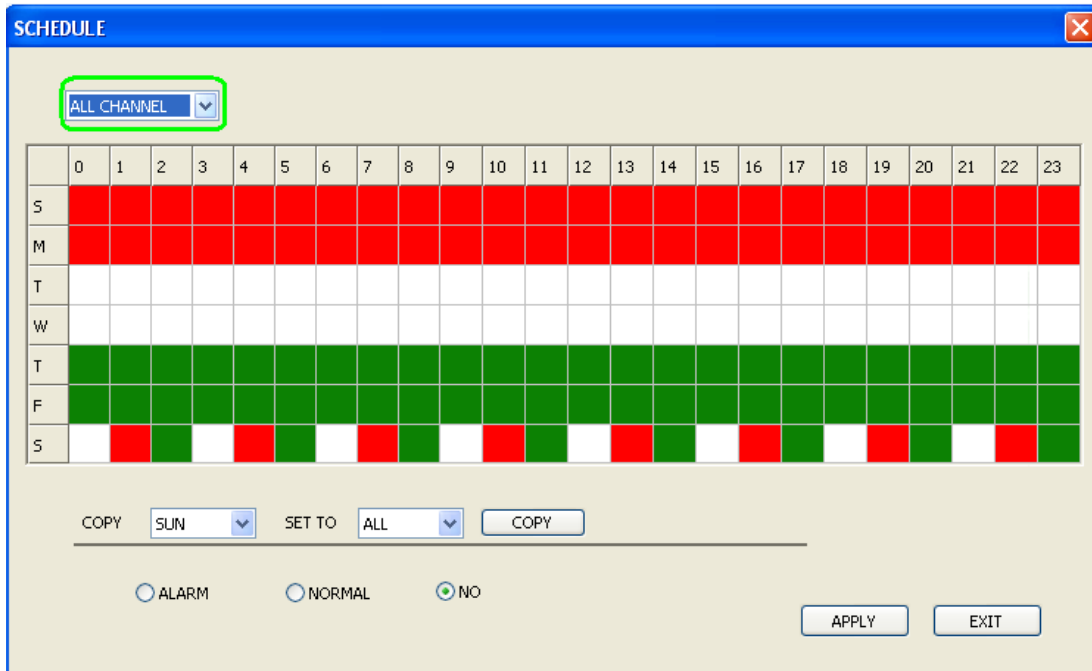
AUDIO: OFF

REC.MODE: TIMER RECOR

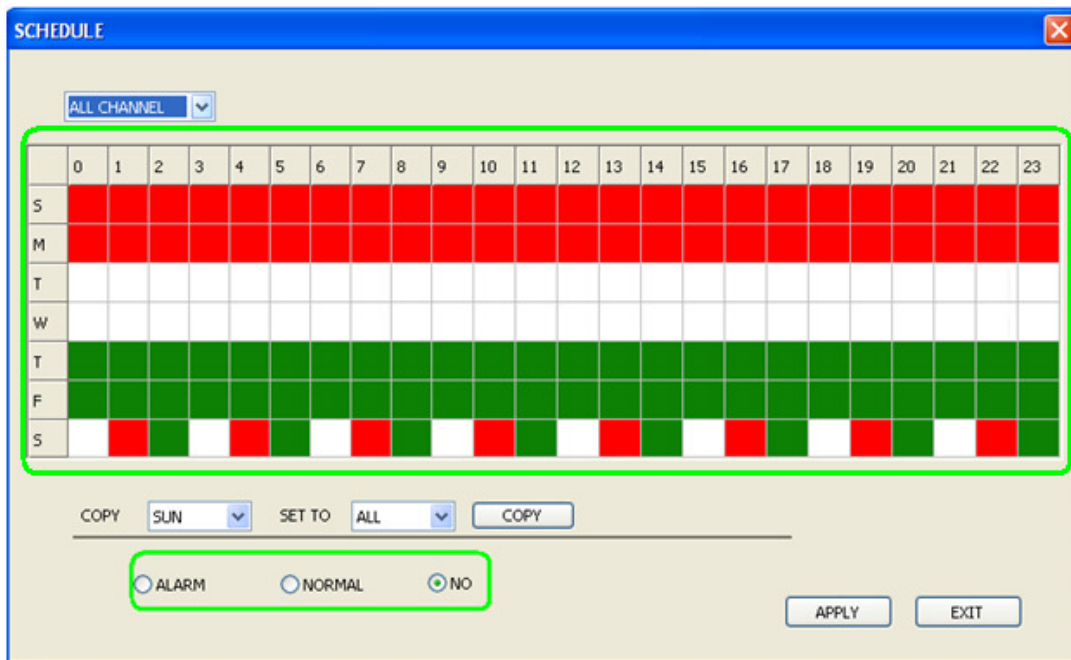
SCHEDULE

QSD9004 Scheduled Recording over the Network

STEP 7: Set which channels you want to schedule recording for.



STEP 8: First, choose which type of recording you wish to schedule. “ALARM” is for Motion Detection and Alarm recording (shown as red on the schedule); “NORMAL” is for Scheduled recording (shown as green on the schedule); and “NO” is for no recording (shown as white on the schedule). In the schedule, set the times for the chosen type of recording by clicking on individual boxes.



QSD9004 Scheduled Recording over the Network

STEP 9: Click “APPLY”.

The screenshot shows the 'SCHEDULE' window with a blue title bar and a close button (X) in the top right corner. Below the title bar is a dropdown menu set to 'ALL CHANNEL'. The main area is a 24-hour grid with columns numbered 0 to 23 and rows labeled S, M, T, W, T, F, S. The 'S' and 'M' rows are entirely red. The 'T' and 'W' rows are entirely white. The 'T' and 'F' rows are entirely green. The 'S' row has a checkerboard pattern of red and green cells. Below the grid are controls for 'COPY' (set to 'SUN'), 'SET TO' (set to 'ALL'), and a 'COPY' button. There are three radio buttons: 'ALARM' (unselected), 'NORMAL' (unselected), and 'NO' (selected). The 'APPLY' button is highlighted with a green border, and the 'EXIT' button is to its right.

STEP 10: Click “EXIT”.

This screenshot is identical to the previous one, showing the 'SCHEDULE' window with the same grid and controls. In this step, the 'EXIT' button is highlighted with a green border, while the 'APPLY' button is no longer highlighted.

QSD9004 Scheduled Recording over the Network

STEP 11: Click “APPLY”.

CHANNEL	CH1	<input type="button" value="ON"/>	CH2	<input type="button" value="ON"/>	CH3	<input type="button" value="ON"/>	CH4	<input type="button" value="ON"/>
RESOLUTION	<input checked="" type="radio"/> HIGHEST	<input type="radio"/> HIGH	<input type="radio"/> NORMAL					
QUALITY	<input checked="" type="radio"/> BEST	<input type="radio"/> FINE	<input type="radio"/> NORMAL					
AUDIO	<input type="button" value="OFF"/>							
REC.MODE	<input type="button" value="TIMER RECOR"/>		<input type="button" value="SCHEDULE"/>					