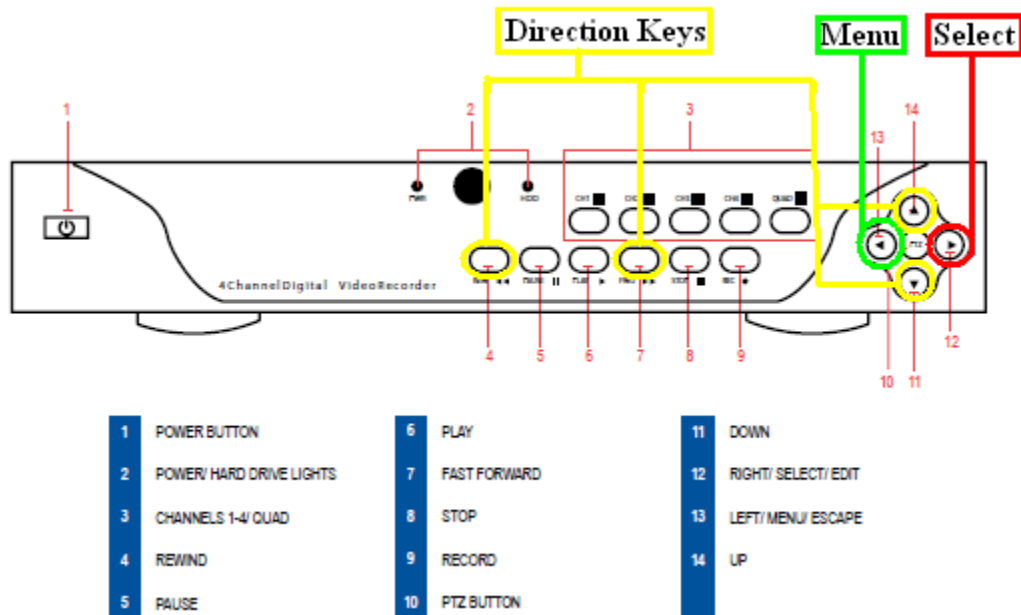


# QSD9004 Motion Detection Recording

**STEP 1:** Press the “Menu” button on the Front Panel of the DVR

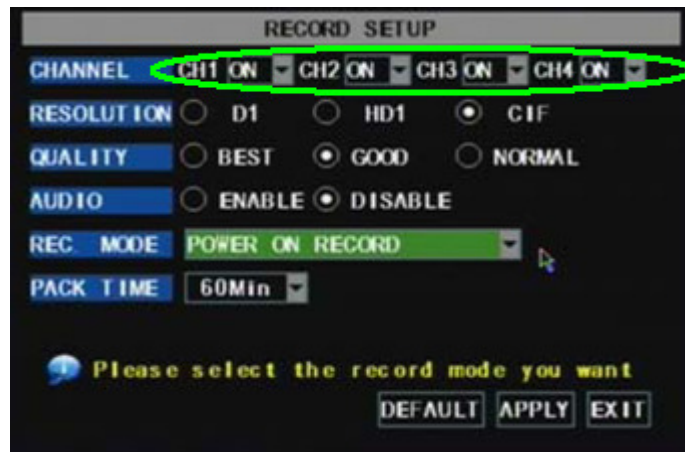


**STEP 2:** Move cursor to “RECORD” press the “Select” button on the front panel of the DVR.



## QSD9004 Motion Detection Recording

**STEP 3:** Set which channels you want to record (switch to “ON”)

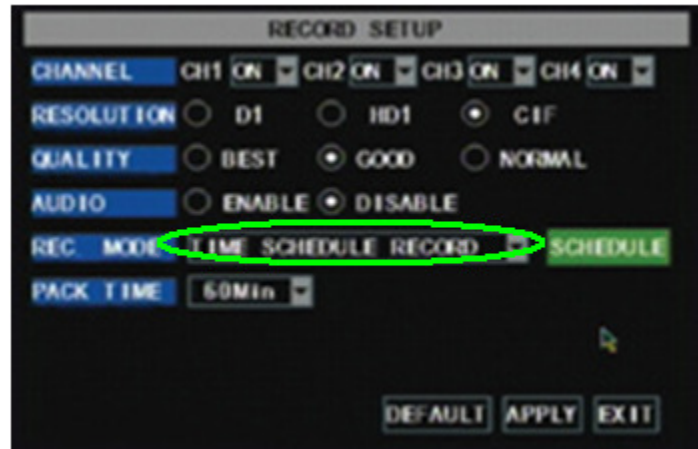


**STEP 4:** Set the pack time; this will determine how long each recorded file will be.



## QSD9004 Motion Detection Recording

**STEP 5:** Set Rec. Mode to “TIME SCHEDULE RECORD”

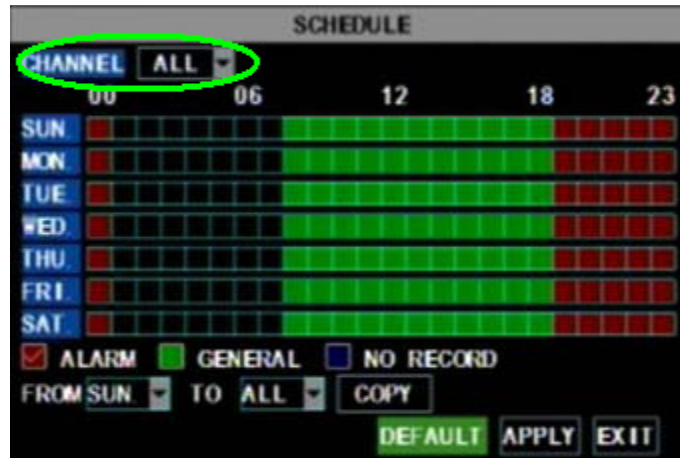


**STEP 6:** Move the cursor to “SCHEDULE” and press “Select”

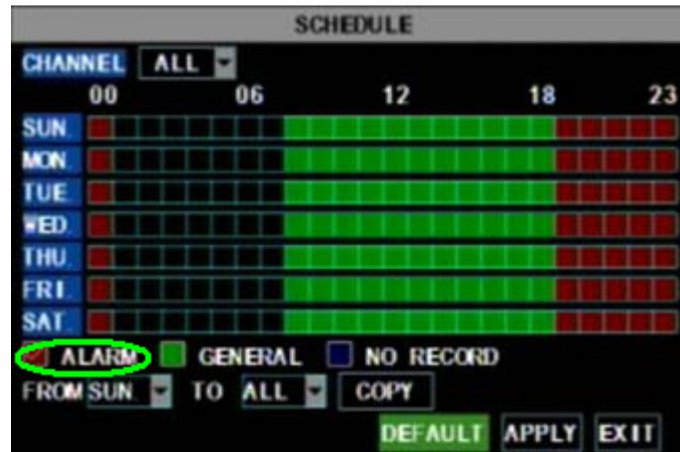


## QSD9004 Motion Detection Recording

**STEP 7:** Set which channels you want to schedule under “CHANNEL”

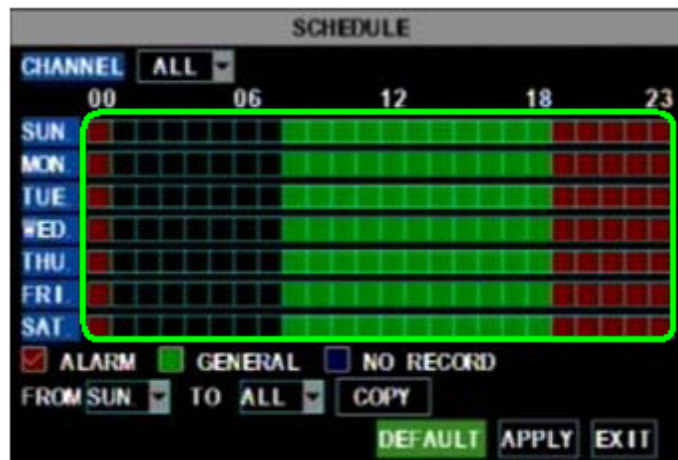


**STEP 8:** Put a checkmark in the box next “ALARM”

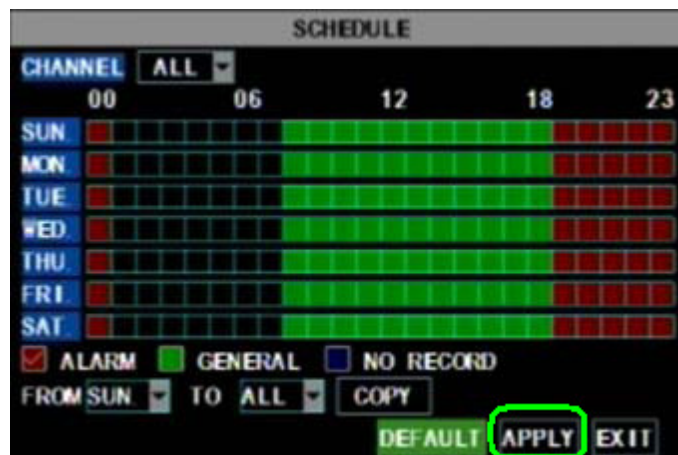


## QSD9004 Motion Detection Recording

**STEP 9:** Select the desired dates and times that you want to schedule recording for.



**STEP 10:** Once you have set your schedule, move the cursor to “APPLY” and press “Select”.



## QSD9004 Motion Detection Recording

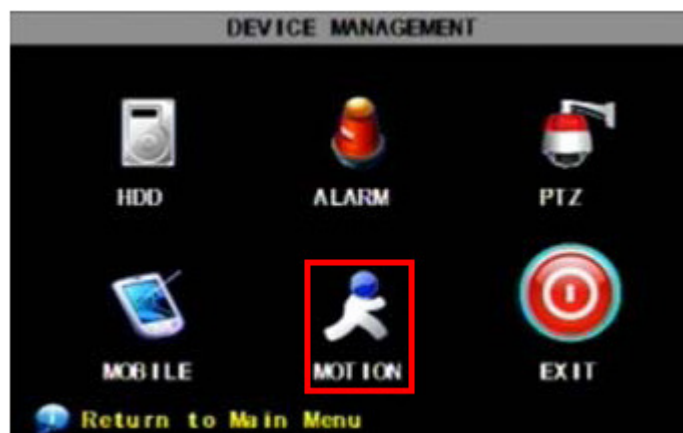
**STEP 11:** Move cursor to “APPLY” and press “Select”.



**STEP 12:** Move cursor to “DEVICES” and press “Select”.

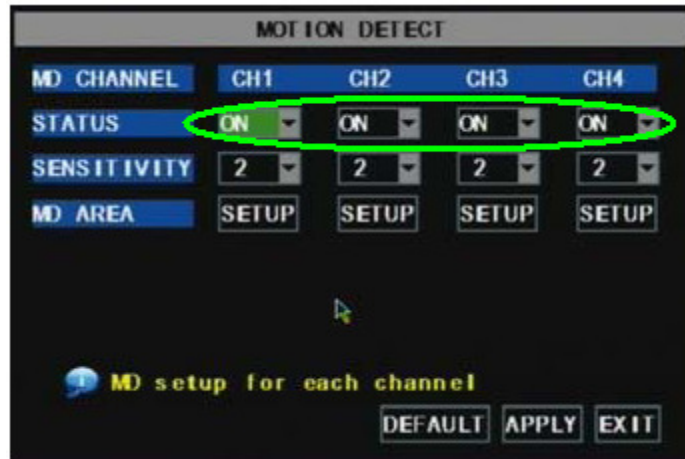


**STEP 13:** Move cursor to “MOTION” and press “Select”.

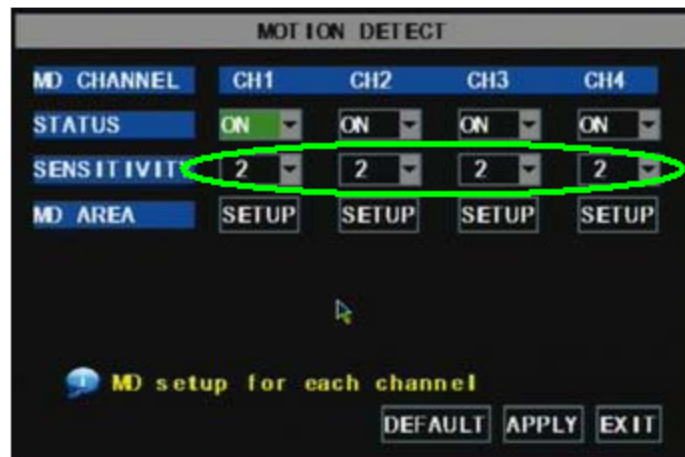


## QSD9004 Motion Detection Recording

**STEP 14:** Set which channels you want to enable motion detection for (switch to “ON”)

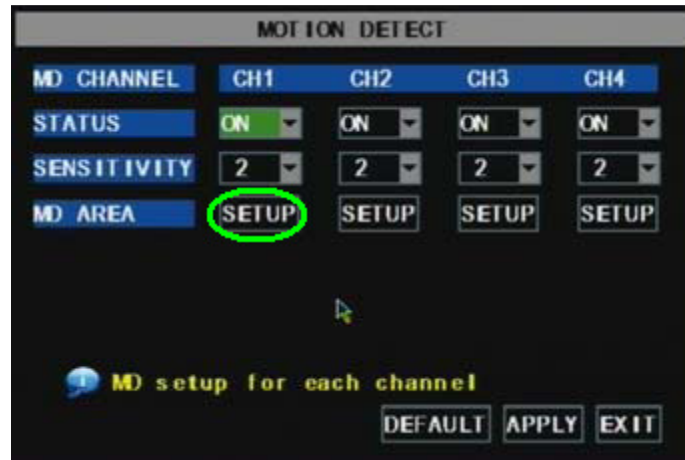


**STEP 15:** Set the sensitivity level for triggering motion detection

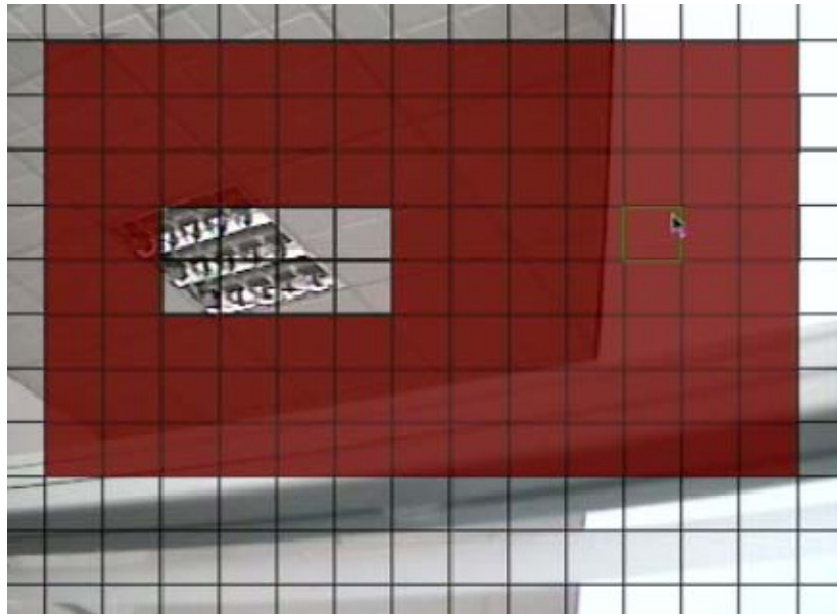


## QSD9004 Motion Detection Recording

**STEP 16:** Move the cursor to “SETUP” and press “Select”.



**STEP 17:** Using the direction keys and the “Select” button, you can set the motion detection area. The area that is red is sensitive to motion.



## QSD9004 Motion Detection Recording

**STEP 18:** Move the cursor to “APPLY” and press “Select”.



**STEP 18:** When motion detection is activated, a small “M” will appear on the screen.

