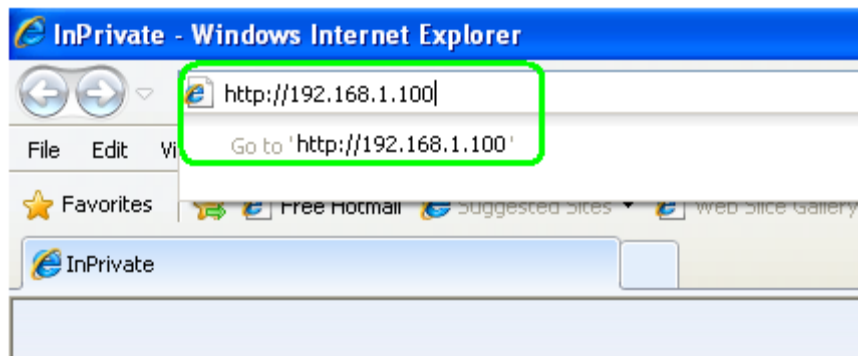


# QSD9004 Backing Up Files over the Network

**STEP 1:** Turn on your computer and open Internet Explorer



**STEP 2:** In the address bar, enter in the IP address of your DVR.



## QSD9004 Backing Up Files over the Network

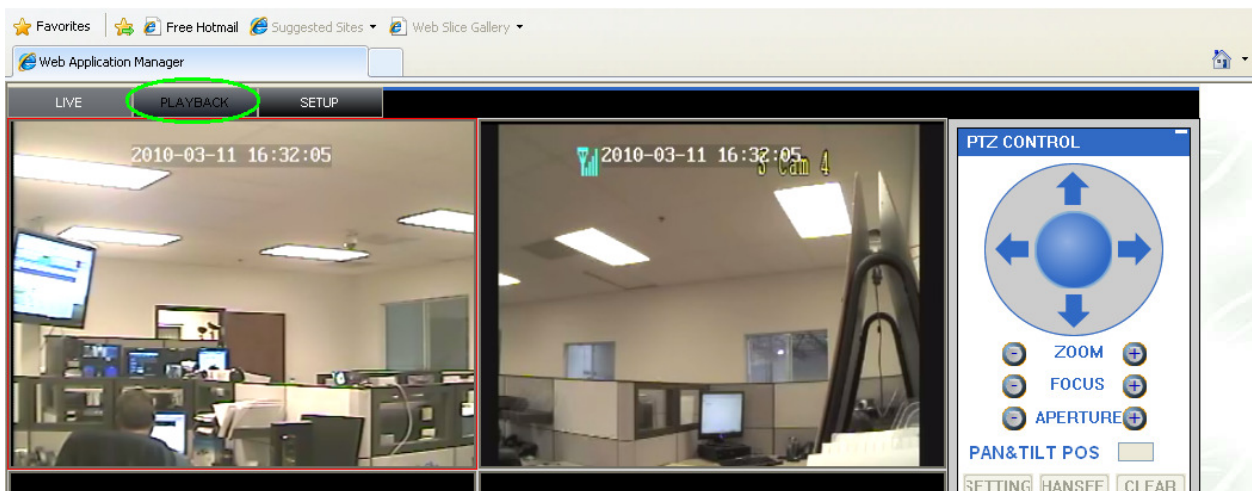
**STEP 3:** Click on the “LOGIN” button. If you set up a password on your DVR, enter it in the “PASSWORD” field before clicking “LOGIN”. (If this screen does not appear, see the “ActiveX Controls” guide)



The image shows a "USER LOGIN" interface on a blue background. It contains the following fields and buttons:

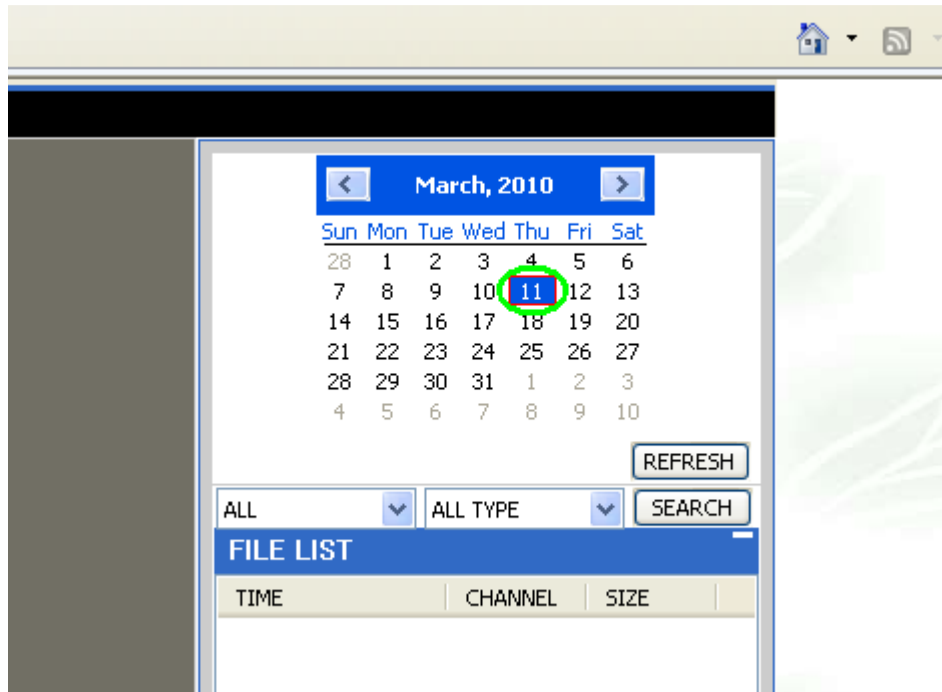
- IP ADDRESS: 192.168.1.100
- MEDIA PORT: 9000
- PASSWORD: (empty field, highlighted with a green border)
- NETWORK: INTERNET
- LOGIN button (highlighted with a green border)
- RESET button

**STEP 4:** Click on the “REPLAY” button.

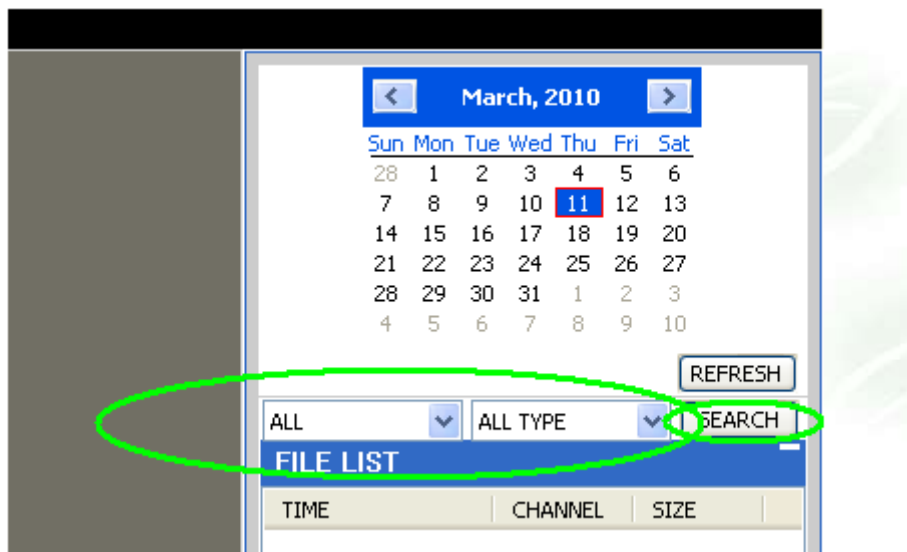


## QSD9004 Backing Up Files over the Network

**STEP 5:** Click on the date of your file that you are searching for.

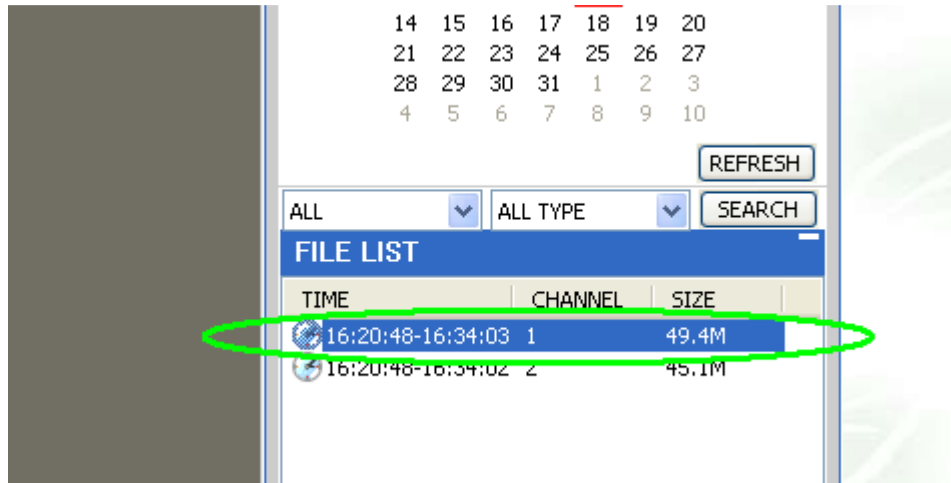


**STEP 6:** Enter the Channel and file type of the file you are searching for and then click “SEARCH”.

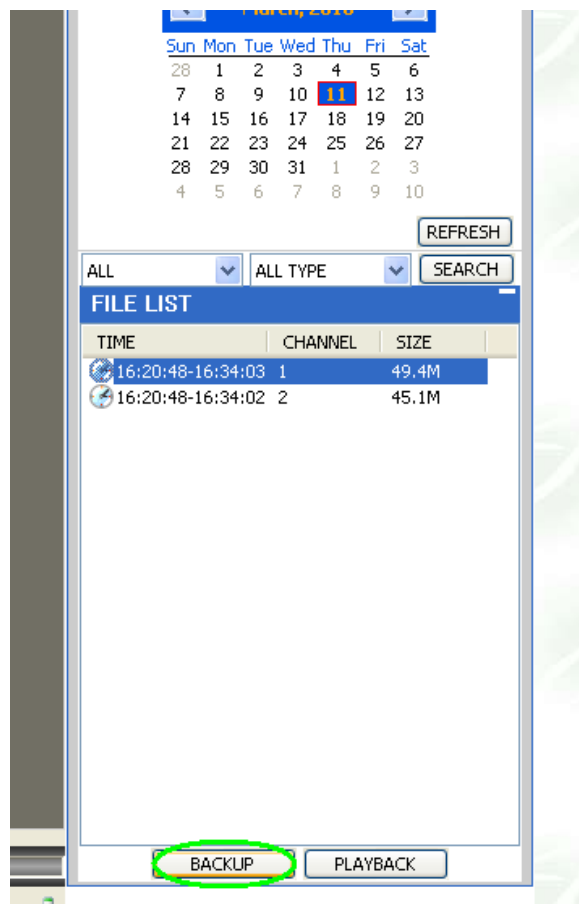


# QSD9004 Backing Up Files over the Network

**STEP 7:** Under the FILE LIST, click on the file(s) you wish to back up.

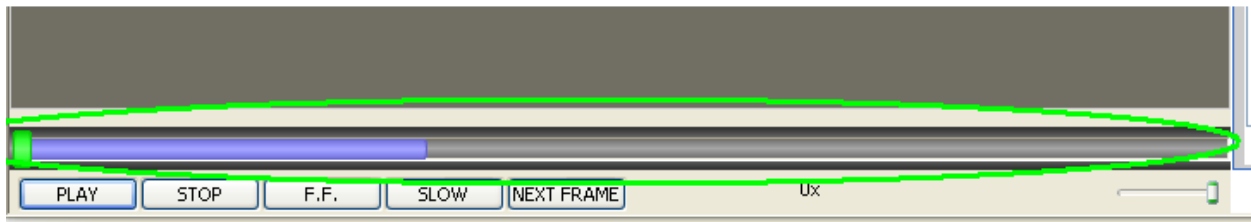


**STEP 8:** Click on “BACKUP”.

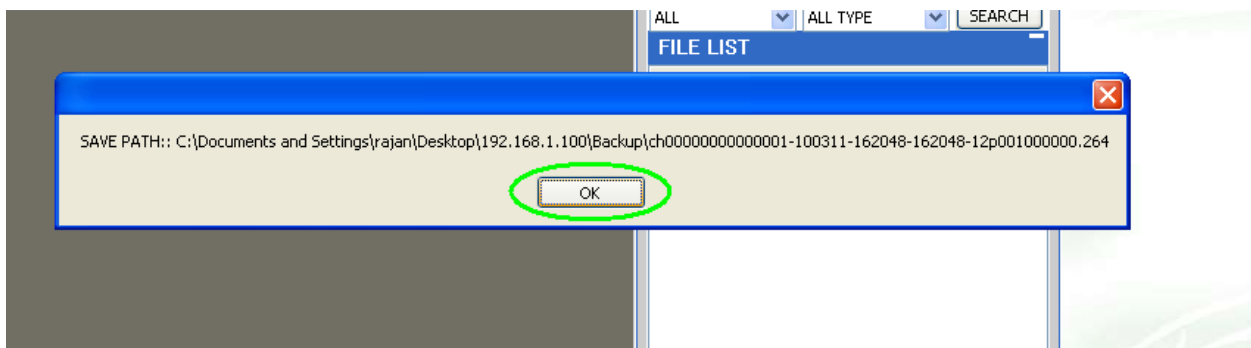


## QSD9004 Backing Up Files over the Network

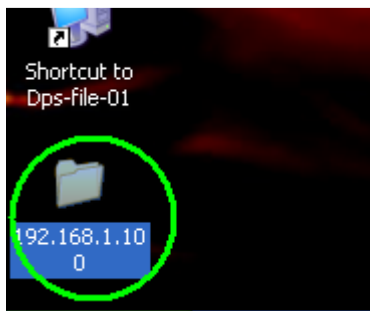
**STEP 9:** The progress bar on the bottom of the screen will tell you how much of your file has been backed up.



**STEP 10:** Once the file is done being backed up, a pop up will appear informing you where to locate the file. Click “OK”.

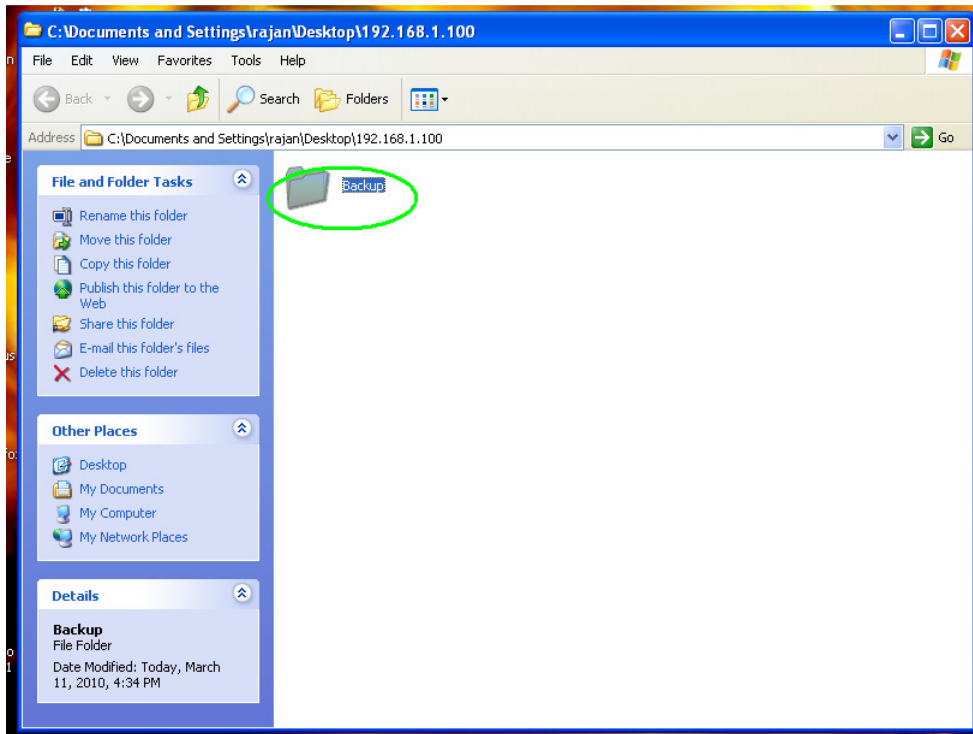


**STEP 11:** Locate the file folder that was created when you backed up your file.



# QSD9004 Backing Up Files over the Network

**STEP 12:** Open the folder entitled “Backup”.



**STEP 13:** Your file is located in this folder and it will be in H.264 format. You can open in the Multimedia Player program that comes with your DVR. If you wish to convert your files to AVI, read the “QSD9004 Converting Files to AVI” guide.

